

# The Mounts Winter 2026

Community Newsletter of Mt Wilson and Mt Irvine



## EDITORIAL

'Winter is coming'. So wrote George RR Martin in Game of Thrones, the line being used as the title for the first episode of the television series. What sort of winter will we get this year on The Mounts? It will certainly be quieter. As reflected in many of this issue's contributions life on The Mounts has been quieter than normal since the changes to allowed traffic on Mt Wilson road at the zig-zag. The cooler temperatures have arrived though major snow is not yet forecast. The cover picture is from the last big snow we had in 2015, perhaps we will get some snow this winter.

We encourage all readers to send in their contributions, words, pictures, recipes – if it matters to you we want to hear about it. All contributions are welcome to [themounts2786@gmail.com](mailto:themounts2786@gmail.com), please include images where you can as separate attachments.

## SAVE THE DATES

Saturday 27 June Brigade AGM via Zoom and at the Mt Wilson Fire Station from 4pm (page 5)  
Saturday August 15 for the last of our concert series in St Georges at 3pm (page 17)  
Saturday October 3 for the MWPA AGM in the Village Hall at 5pm

# MARY HOLT TRIBUTE

In our Autumn edition we paid tribute to Mary Holt who died on 26 February. We are thankful to Mahn England for sharing the below tribute that was included in the program for the Australian Brandenburg Orchestra's Choral Splendour series. Additional thanks to the Australian Brandenburg Orchestra for giving their kind permission to allow us to reproduce it in The Mounts.

## Vale Mary Holt OAM – Brandenburg Life Patron



The Late Dr John Holt & Mary Holt OAM

We are deeply saddened to learn of the passing of Mary Holt OAM, Life Member of the Australian Brandenburg Orchestra.

Since Mary and her late husband John Holt were introduced to the Brandenburg in 1995, Mary has been an enduring supporter and integral member of our Brandenburg family. Mary was a constant and enthusiastic presence at our performances and events for 32 years, generously supporting the refurbishment of our rehearsal studios in Edgecliff, and donating a replica of Mozart's forte piano, inside of which includes a touching tribute to Toby, her terrier.

"Mary's passionate support of our work has inspired our musicians and audiences alike. She has significantly contributed to the Brandenburg's trajectory as Australia's flagship Baroque and early music ensemble, and to the entire sector through her profound commitment to Australian cultural excellence.

"Mary loved belonging to the Brandenburg family and we were privileged to enjoy such a close connection with her. We salute her extraordinary generosity and

are humbled to have played such a demonstrably important role in her life".

**-Bruce Applebaum,**  
Managing Director and Co-Founder

Mary enjoyed her profession as a pharmacist and was active within her community in Mt Wilson. With her husband John, renowned veterinarian, they were passionate about supporting wildlife and conservation, animal research and welfare, and natural history.

We are grateful for Mary's legacy, passion, and dedication to the Brandenburg.



Paul Dyer AO, Mary Holt OAM and Her Excellency the Honourable Margaret Beazley AC KC, Governor of New South Wales

## **MWPA PRESIDENT'S REPORT**

This is the quietest autumn I have ever seen in Mount Wilson with the boom gate in place. The MWPA will continue to send through updates on the status of the road as received. At this point we are being told the next update will be mid-June. The MWPA and the RFS are keeping up the pressure, but I encourage you to also write to your representatives.

A big thank you to David Howell and his band of volunteers who took part in Clean Up Australia for Mount Wilson. They gathered 15 bags of rubbish and a pile of abandoned tires.

And a note for your social calendars. Please add the following dates to your dairy -  
Saturday August 15 for the last of our concert series in St Georges at 3pm (see page 17)  
Saturday October 3 for the MWPA AGM in the Village Hall at 5pm

Stay warm!

Nancy Fox

## **UPDATE FROM YOUR RURAL FIRE BRIGADE**

While we didn't have a very active fire season (fortunately), we've remained very busy with lots of callouts, training, advocacy and generally being in shape to keep protecting our communities.

In all, we had ten callouts of various types over the last few months. Our Community First Responders responded to three callouts to assist residents /visitors who have called 000 and requested Ambulance assistance and to assist Police Rescue and NSW Ambulance. We've had trees down across roads, attended two motor vehicle accidents and sent a crew to support the Six Foot track race.

No bragging but several Six Foot track runners did compliment us on the cut of our watermelon slices...not too thick, not too thin. In the words of one runner: 'Not to throw shade on the other drink stations, but your watermelon is the best!'. Our ingenious heat stress prevention techniques – ice down runners' backs and placed in their hats (an offering unique to us, we think) – also met with great applause and not a few shrieks (in a good way). We had a great day. So, next time members are asked to come along, please get behind this special activity. Seriously, it's important that we as a brigade support District wide activities whether they be events like the Six Foot track or other opportunities to interact with other brigades as well as familiarise ourselves with other areas. In the case of the Six Foot track, the RFS receives funding which is then shared out amongst the Brigades.

On an even more serious note, we do need to participate more in Hazard Reductions, fire and other events outside our local area. Apart from us showing that we support wider RFS activities, working on a HR prepares you for when you encounter real fire. While training with witches hats (which regularly feature as fires we "knock down" in our training scenarios) is good training in deploying hoses, if you've worked on HRs it's very reassuring to know that when you do work on a real fire, you know how it feels, how to work with your fellow crew members and how to move safely around a fire ground.

Last year we started the practice of conducting some of our monthly training sessions at local properties - pointing out their infrastructure, buildings, water sources, access routes and generally applying all the things we learn about fighting fires in practical settings. We've continued this approach this year with more properties volunteered as training venues in the coming months. It can be an eye-opening experience and a great way to check on your own level of preparedness as seen through the eyes of experienced fire fighters.

As the closure of Mt Wilson Rd to visitors has severely affected some of our Mt Irvine folks, we decided to bring forward planned familiarisation training at Mt Irvine to our April training day. This allowed us to combine training with nut picking at Nutwood Farm and Kookootonga so that owners could sell those nuts at several cafes along Bells Line of Rd. It was good for us to reacquaint ourselves with those properties from a firefighting perspective (most recently, we worked on fires at Mt Irvine at both the 2013 and 2019 fires) as well as look for potential helicopter landing sites and other important features. Helping our neighbours was a huge bonus. Our photo is of our members and some neighbours at Nutwood Farm.



We've kept our twice monthly maintenance nights going. There are always things to do to keep us ready for action. And we have a great time getting to know other members better. Much nicer to know who you're sitting next to when you all squeeze into a fire truck!

We're also recruiting more members with a brand-new group of fire fighters (supported by experienced members) learning their basics. Welcome!

As you know, we've been advocating hard for a new fire station at Mt Irvine. Unlike the extensions to the Mt Wilson station which the Brigade undertook (with grants and community donations), the new Mt Irvine station project is being undertaken by the RFS. We're continuing our work with RFS District Office and Blue Mountains City Council as well as the Mt Irvine Hall Committee to get this done.

Last article I reported on the work I've been doing to bring to Federal Government and Telstra attention that the new Telstra Tower at Mt Tomah is not living up to its promise of providing better reception for Telstra mobiles along Bells Line of Rd and for communities at Mt Tomah, Mt Wilson and Mt Irvine. I've met with the Captain of the Mt Tomah Brigade and been advised that, in some areas, they feel that reception is worse, not better. Similarly, some of our members are

reporting reduced or non-existent coverage where they did have some level of coverage before. I've been reporting all this to Susan Templeman's office (our Federal Member of Parliament) and been assured that this is being put to Telstra through the Minister for Telecommunications' office. As you may recall, the Black Spot reception program has been funded by the Federal government. So, there is leverage there to hold Telstra to account for their promises to improve reception and we don't just want better reception along small parts of Bells Line of Road! In the meantime, if you are affected by this, please lodge formal complaints with Telstra and keep telling them. If we shrug our shoulders and give up, then there's no accountability.

Still in advocacy mode, we've continued to brief the RFS District Office about the emergency services perspective on the current access on the zig zag coming into Mt Wilson and the long timeframe for having the road restored to two-way traffic. We've made a submission to the Local Emergency Management Committee pointing out all manner of problems with the current state of access, particularly in a big fire season, and the dire consequences if the remaining lane has to be closed and we're cut off by road. We've checked helicopter landing sites and run scenarios on the feasibility of getting ambulance level help to patients not close to current helicopter landing sites.

While we as Brigade have to focus on the emergency services perspective here, we're also liaising with the Mt Wilson Progress Association to see how we can pool information we're receiving from various sources and best coordinate within the confines of our respective roles. The latest informal advice (stressing the 'informal' here) is that engineering plans will be done by June with work being planned for commencement in October. There are caveats around those time frames but nevertheless we can't let this slip down in BMCC's 'to do' list. October is definitely in the next fire season window.

The best thing we can all do is hold BMCC to account for this work and indicative timeframe and to remind it, and the Mayor, of commitments made that this is a number one priority.

Apart from letting the powers that be know what you think about all these issues, the most practical thing we can all do – as we keep saying – is make sure that YOUR property is as well prepared as it can be to withstand fire, whether it comes via a direct fire front or ember attack. You know the drill: easy access in and out for fire trucks, buildings which don't let embers in, clearing gutters, removing vegetation and fire catching items from around buildings, good water access and working pumps and hoses in the right places.

By the time you read this, we'll be into Brigade Annual General Meeting territory (scheduled for Saturday 27 June from 4pm via Zoom and at the Mt Wilson Fire Station). We'll be sending out the usual notices and information, but we can now pass on one important piece of news. After an amazing 18 years as Captain Beth Raines has decided to step down from this role. We'll be embarrassing her with effusive praise at our AGM. So, members, do come along for this and all the rest of the fun of an AGM.

Keep safe and proactive, people.

Elizabeth Montano, Member of the Brigade Executive and WH&S Safety Officer



The Mt Wilson and Mt Irvine Historical Society are deeply indebted to Emma Winn for her very generous offer to pay the insurance on the Turkish Bath Museum for this year. Emma is the great granddaughter of Jesse Gregson, the founder of “Yengo” at Mt Wilson. The Gregson family also built Chimney Cottage, Wyndham, Applecot, and Windyridge and made several bequests to the community.

As a modest tribute to the Gregson family, the society has trawled through the archives and found the following article on Jesse Gregson which we hope you will enjoy.

**An excerpt from an article entitled ‘Mt Wilson’s Early Families and their Historic Houses’ by Mary Reynolds 1999, Revised 2007.**

### **Jesse Gregson [1837- 1919] and Yengo**

‘He was dearer to me than friends I have known and prized much longer, partly no doubt, because he was so perfect a gentleman in soul, in outlook, in breeding.’

Sir Mungo McCallum wrote these words when Jesse Gregson died in 1919 in Leura Hospital. [From Dr Currey, Mt Wilson N S W, 1968]

It is intriguing how a particular type of person seemed to be attracted to Mt Wilson if one is guided by the thoughts of those who wrote about these first settlers. What was the background of Jesse Gregson?

He was the son of a solicitor in Essex, England and having had a good education was set to follow his father. However not being a keen student, at the age of 18 he chose to travel to Australia. On the ship he met Alexander Busby, a squatter from Cassilis and a member of the Legislative Council from 1856- 1858. His father, John Busby, brought the first regular water supply to Sydney called Busby’s Bore). Finding that his letters of introduction failed to produce any interest in him, Jesse Gregson was asked by Alexander Busby to go to Cassilis, NSW until he found a job. A short time after, Dr Traill, a friend of Busby’s offered work to Jesse on his property which was nearby. In 1859 however he left to take sheep overland to the Dawson River in Central Queensland for Alexander Busby who had taken up a large lease there. This story of locating a new run near Rainsworth, inland from Rockhampton, is a real pioneering saga, including tragic clashes with Aboriginal people.

In 1867 Busby entered into a partnership with Jesse Gregson in Queensland. Then in 1870 Jesse married Katie, the widow of Alexander McLean, a former Surveyor General of N S W. Nellie, their first child was born in 1871. Later she was to be much admired in Mt Wilson. Not long after, Jesse Gregson met E.C. Merewether at a property in the Liverpool Plains.

In 1874 Jesse Gregson decided not to renew his partnership with Alexander Busby, one reason being that his wife Katie was finding the climate difficult. For the next 6 months the family boarded at Bowenfels near Lithgow and had ‘a very happy time’. [from Jesse Gregson’s Diary] Meanwhile Alexander Busby had recommended Gregson to the Chairman of the Australian Agricultural Co. to follow Edward Merewether when he retired in 1875. Knowing the right people makes a difference! Gregson and his family were invited to London to have an interview with the Directors. This was of course most successful. In January 1875 Jesse Gregson was appointed assistant to E.C. Merewether with the right to succeed. The company built a home for him and Katie at Waratah, Newcastle where they lived until 1904 with their two sons and two daughters.

Gregson wrote of Merewether with gratitude for 'his kindly assistance and advice, and for an unwavering friendship which lasted until Merewether's death in 1893'.

Furthermore, Mr Merewether's account of Mt Wilson, its scenery and climate persuaded Jesse to secure 8 acres. His first choice was not the best, so a further seven and a half acres were bought from Mr A.J. Stopps through Mr Edwin Daintry.

This portion was number 17 on Wyndham's original plan and became the site for his home, called Yengo [said to be an Aboriginal name for mountain.] Clearing and building began. 'It was not until the summer of 1880-1 that our cottage at Yengo was available for occupation-----then it was far from complete.-----From 1880 onwards we never missed a summer at Yengo, going there early in December and remaining till April.' [From Jesse Gregson's Diary]. His refuge was Yengo. Other houses in the vicinity at the time were those of Mr Richard Wynne who had been the pioneer, Judge Stephen, Mr A Hay, Mr E. K. Cox, and Mr G.H. Cox were building about the time I did. In his diary it was also recorded that 'James Cox built a couple of years later, a very welcome addition to our small society'. Thus by 1878-79 Wynne had built Yarrowa, Judge M. H. Stephen Campanella; Hay Nooroo; E. K. Cox Bebeah; G. H. Cox Beowang; and James Cox began Balangra soon after 1880.



An early photo of Yengo

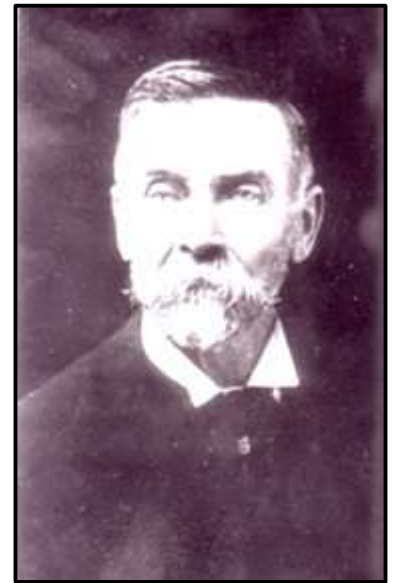
First a few words about Yengo.

Built of sandstone similar to Dennarque, it seems that Gregson was persuaded to use sandstone by Merewether suggesting that fire was always a danger. Both buildings were being erected at the same time from 1878-1880. Yengo had the U plan that was now the practice on the mountain. The garden became its chief delight blending up to and with the verandah planned around the outside. In fact, the verandah extended the house into the garden. It was the same width (eight feet) as the Dennarque verandah.

There is no record of an architect or builder although it is possible that James Nutman was the builder as it has coursed sandstone, double hung windows, doors and skirting boards all identical with Dennarque. The posts on the verandah were coarser versions of those used at Dennarque. Yengo's plan centred around a central hall seven feet, six inches wide, off which were equal sized dining and drawing rooms with a study added to the end of the dining room. There was a fireplace in each room. From the drawing room there was a wing of three bedrooms which opened out onto a covered way, providing access to the kitchen wing on the opposite side of the U. The kitchen wing was built separately from the house and first so that it could have been used to house the workmen.

Jesse Gregson had his maid servant from Waratah, Norah at Yengo quite early, 1880- 1881. She married Smith and they cared for Yengo in the winter and made life comfortable in the summer. Then when Smith died in 1900, the eldest son Sydney, Robert Kirk, another pioneer, was employed. Kirk had been an assistant to Smith at Yengo. Sydney Kirk had married Mary Marceau who had been working at Campanella in 1887. Mary was a descendant of Joseph Marceau who had participated in the Rebellion of 1837 in Canada and was transported to NSW to be held in the Longbottom Stockade along the Parramatta River [near Concord]. Joseph was the only one of those Canadians to settle in Australia. Sydney and Mary spent their entire life in Mt Wilson, producing two daughters and seven sons. Sadly the two daughters died as young women, however the seven sons survived to work and live on the mountain and without whom many property owners would have found life impossible here.

For Jesse Gregson (right) plants and the garden totally absorbed him. He became an accepted authority so much so, that his collection of specimens were to be stored on the National Herbarium of N S W. In 1904 he retired from the Australian Agricultural Co. to spend his final years at Yengo. World War 1 was to deprive him of one son, Willie, while the other Edward returned from the war to settle at Mt Wilson, beginning a new era. J. H. Maiden of the Sydney Botanical Gardens wrote of Jesse Gregson in 1919 after his death----'One of the last of the original party of gentlemen who took up land at the instigation of Mr Du Faur. He knew the sandstone gullies with their basalt tops well and took a delight in exploring them and began to systematically collect flora in the early 1890's. He became an authority on certain exotic plants and experimental tree planting, keeping records of failures and successes'. His son, Edward was to pursue the same dedication to plants and in his own right was recognised as an authority on the flora of Mt Wilson having a eucalypt named after him--the Mallee Snow Gum being *Eucalyptus gregsoniae*



Mary Reynolds 1999

## NEW IMAGES SCANNED

Below are five images (out of 2,000) recently scanned by David Howell for the Historical Society.



Waterfall Bridge with early Chimney Cottage in the background (96/82)



The interior of the Chimney Cottage tea Rooms (98/113)



New Year's Sports Day, 1931, on Silva Plana (98/128)



Part of original road off present Mt Irvine Road - known as "Arkensall" track (97/27)

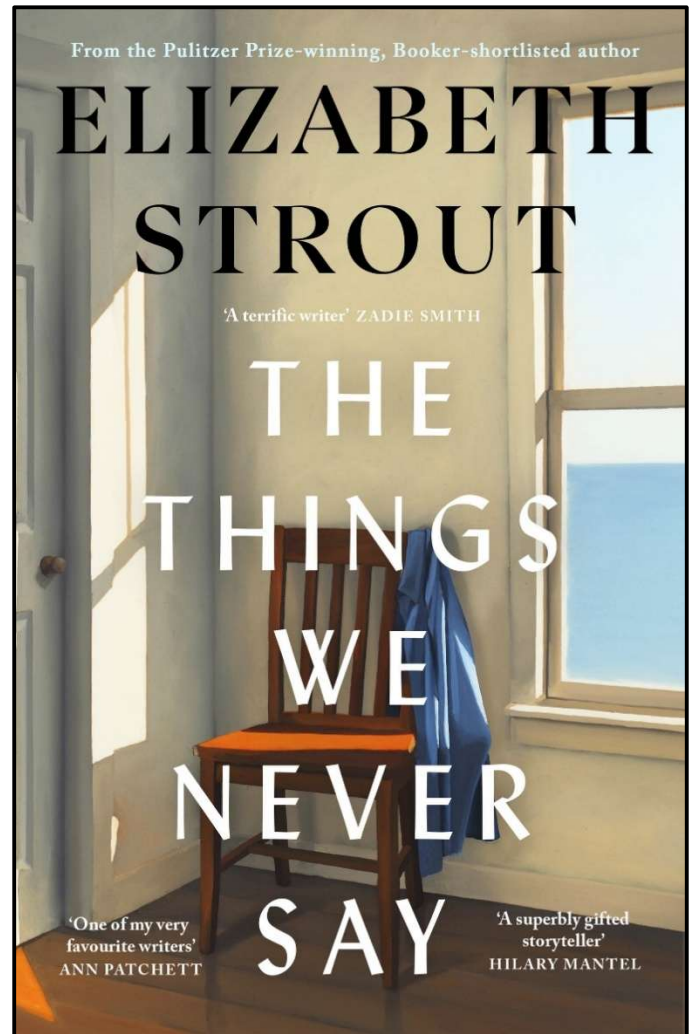


The Avenue, Mt Wilson, from an early postcard (2004/25)

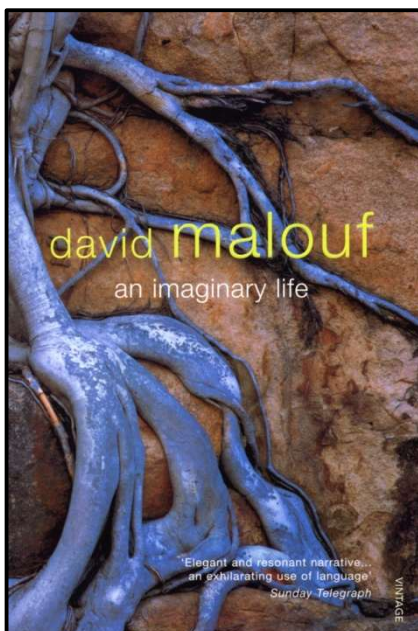
## BOOK REVIEW

Elizabeth Strout has built a very well-deserved reputation for shortish quiet novels about people who seem quite ordinary, but they reveal the desperation, anger, acceptance and happiness of people who are not famous or great but who may make a difference to others in how they live, understand and think about themselves and their world. These are people who deal with the normal vicissitudes of life and have no idea of how significant they may be to others, and certainly to the readers of Strout's work. Her characters often intersect with each other, often tangentially, and her readers have followed the history of characters such as Olive Kitteridge with devoted enthusiasm.

Her newest novel is called *The Things We Never Say*, a title both relevant and cryptic. It traces the later life of Artie Dam, married to Evie whom he loves with the acceptance of many years of marriage. They have a son, and Artie is a dedicated history teacher, and we see just how much he loves and understands his students. We see him interacting with them, sometimes a difficult process, and teaching the history of the American civil war. The half-hidden umbrella over this novel is the presidency of Trump who is never named but is seen as undermining many of the important positions of public and private life.



In his middle age Artie finds out a secret which has the power to re-shape his life. He also has an accident which alters how he feels about his world. The novel mentions the seemingly important events in anyone's life: children, friends, family almost incidentally but the intricate and close focus on Artie himself makes him far more than just one man while avoiding the cliches of being an 'everyman'.



Strout is one of those writers who make good writing seem easy, and it never is. This is a conversation between Artie and the important people in his life that we are fortunate to overhear. Artie changes in unexpected ways, surprising himself and the reader, but he also remains true to who he is. It is a privilege to share moments of his life and to admire his knowledge of truth and responsibility.

And also...

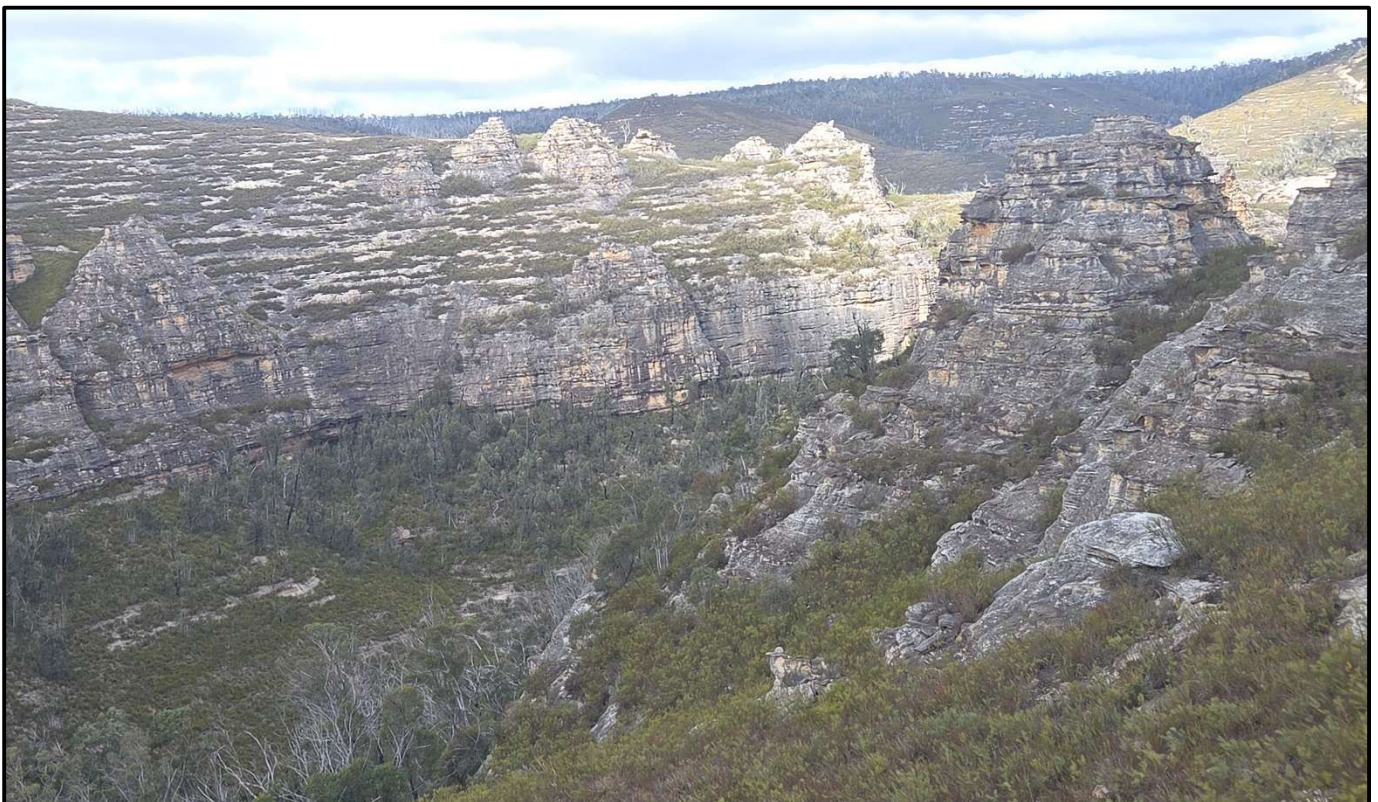
I have just re-read *An Imaginary Life*, the second novel by the great Australian writer David Malouf who died recently. This too is about the role of older men, of fathers and sons, of teaching and influence. Above all it is about how to live a life. Alison Halliday

## BUSHWALKS WITH UPPER MOUNTAINS BUSHWALKING GROUP

Walks are run with upper mountains bushwalking club, usually on a Friday, some in the Mt Wilson area and some exploring areas nearby. Good opportunity for locals and visitors to see and learn more about the area. If Interested email [peter\\_raines@hotmail.com](mailto:peter_raines@hotmail.com) or look at [UBMBC | Activities Program](#) - Most walks run from about 9am till mid-afternoon, sometimes a bit of travel before and after.

The following walks ran in Autumn

8 May 2026 - Lost City walk at Gardens of Stone with a ridge walk out to Lost City West. Day spent exploring the lost city pagodas, walking track, two old dams and some mining history.









2 April 2026 - [Mt Irvine - Runners Track - Danes Way - Scrivener Pass - Picnic Point](#) - 12km Exploring from Farrer Road East out to Danes Way Mt Irvine, return mainly by a different route, it was part of the Mt Wilson to Bilpin Bush Run event 1995 - 2012, taking in a mix of landscapes, soil and vegetation types, views to Berambing and Mt Tomah.

Walks for winter

**Fri - 12-Jun-2026** [Bruces Walk - Western section plus Point Pilcher & part of Grand Canyon](#)  
Bruces Walk - Western section including Start of Grand Canyon and the Point Pilcher Track - Starting Evans Lookout Road in Blackheath and finishing in Wentworth Falls. About 12 to 15km some ups and downs all on track or foot pad, but some creek crossings that may involve wet feet - follows historic route from 1930's.

**Fri - 24-Jul-2026** [Mt Wilson to Water Trough Hill - Old Walking Route to Bell, used by Gregson Family - \(Off Track Walk\)](#)

Mt Wilson to Water Trough Hill - Bells Line of Road - Off track walk, in search of Gregson's direct route to Bell, linking Mt Wilson with Mt Wilson Station (Bell) Crosses DuFaur Creek, rest of route is on ridges. About 8km

**Fri - 14-Aug-2026** [Glow Worm Tunnel - Return Via the Old Coach Road and Pagoda Track. \(If time may visit Wolgan View / The Dry Canyon\)](#)

Explore the recently revamped Glow Worm Tunnel walk, Return Via the Old Coach Road and Pagoda Track. (Approx 9km circuit) If time permits visit Wolgan View / The Dry Canyon walk through dry canyon with great views over the Wolgan Valley (Approx 3km)

Peter Raines

# BUSHCARE NEWS

The Mt Wilson Bushcare Group spend a few hours together each month helping to reverse the damage done to the environment by invasive weeds in bushland in Mt Wilson. During this time, we carefully remove weeds and encourage native plants to grow, using the principles of bush regeneration to guide our work.

BMCC provides all equipment, including gloves, secateurs, spade, herbicide, kneeling pads etc. The bushcare sites for 2026 have just been determined. Those interested should check the calendar on the Mt Wilson Mt Irvine community website. There is a good chance there will be a delicious home-baked cake at morning tea. Please bring your own tea/coffee.

Bushcare is held on the second Friday of each month, between 9am and 12midday. It is an enjoyable morning and a great way to learn more about the native flora including beautiful rainforest trees, shrubs and flowers. Autumn provides very pleasant weather to spend a few hours in the beautiful bushland of Mt Wilson.

The current plan for the year is to focus on Sloan Reserve to get on top of the ivy and honeysuckle, to preserve this magical rainforest comprising stunning sassafras, coachwood and tree ferns.

For residents who are wanting to identify and control weeds in their gardens, the booklet “Bushland Weeds of Mount Wilson and Mount Irvine” can be found in the Bushcare section of the community website. The booklet is also available from the MWPA, if residents would like a free copy please contact Sue Woolfenden on 4756 2046.

Everyone is welcome, hope you can join us!

Enquiries:

Mt Wilson contact: Alice Simpson (0414 425 511)

Council contact: Tracy Abbas (0428 777 141)

Alice Simpson

## KING CHARLES III CORONATION TREE PLANTING



Residents may have thought it was an April fool if they passed Founders' Corner early on April 1<sup>st</sup>. A new 3m tree had appeared overnight and beside it a golden spade and a plaque covered in 'royal velvet'.

The occasion was that the Mount Wilson Progress Association had organised a special tree planting to commemorate the coronation of His Majesty King Charles III on 6<sup>th</sup> May 2023. The tree, an English Oak, was planted at Founders' Corner amongst the existing heritage plantings of The Avenue, replacing an established Beech that had died the previous year.

The selection of an English Oak is significant in that this type of tree symbolizes steadfast strength and stability – an enduring attribute of the monarchy.

Coronation tree plantings not only mark the occasion of the crowning of a new monarch, but act as a living legacy for future generations to come.

Long term resident Helen Freeman performed the honor of applying the final spade of soil and unveiling the sandstone plaque. After a short speech by Brenda Murphy from Blue Mountains City Council, all the attendees headed to the church and Wynne Reserve for morning tea in the sunshine.

As early as 1868, the Blue Mountains district has had trees planted in honour of Royalty – we’ve had coronation drives and parks – and we’ve had numerous Jubilee plantings as far back as 1897 for Queen Victoria’s Diamond Jubilee. However, what is unique to Mt Wilson is that it has the honour of being the *only* village to have **coronation tree plantings for successive monarchs** – we have King George VI’s Oak in The



Avenue from 1937, Queen Elizabeth II’s Deodar in Queens Avenue from 1953, and this was joined in 2026 with the Oak in honour of King Charles III. Each has a dedicated plaque to mark the location.

In 2022, the Progress Association also co-funded the renewal of several of the village’s avenues through a federal grant received in honour of Queen Elizabeth’s platinum jubilee. The plaque to commemorate this initiative is in Marcus Clark Reserve.

The Mt Wilson Progress Association is committed to the ongoing support and maintenance of its avenues through an ongoing annual planting and maintenance program.

The King has been informed of the occasion, and we are hopeful of a reply.

James Douglas



## **MUSIC TO SOOTHE THE SOUL RETURNS**

In a welcome return, the Mt Wilson Progress Association will present another concert in the much-loved series, Music to Soothe the Soul.

This series of concerts came about after the bushfires of 2019/20 when the MWPA applied successfully to the Bushfire Community Recovery & Resilience Fund for a grant to fund concerts for the benefit of the residents of Mt Wilson and neighbouring Mt Irvine.

Since 2022 the community has enjoyed concerts presented in the beautiful acoustic of St Georges Church in Mt Wilson by a variety of artists ranging from the voices of Sydney Philharmonia Choirs and Castalia Consort to percussionist Claire Edwardes, chamber ensembles Muffat Collective and Notturmo, and former Artists in Residence, Emily Granger and Tristan Coelho.

In this latest offering from the series, flautist Jonathan Henderson and pianist Alex Raineri will combine to present a program of works for flute and piano in Mt Wilson's church, St Georges at **3pm on Saturday 15 August 2026.**

Jonathan was Principal Flautist with the Estonian National Opera Orchestra and has performed as guest principal throughout Australia and Europe. He has already performed in Mt Wilson as part of the Australian Debussy Trio for a composer workshop with Ross Edwards in 2022 alongside Emily Granger and James Wannan.

A multi-faceted musician, Alex Raineri is the artistic director and producer of Brisbane Music Festival and was a recent Artist in Residence at the Old School. He and Jonathan have a long history of musical collaborations.



Screengrab from Alex Raineri's YouTube channel (<https://www.youtube.com/@alexr5056>)

Jonathan and Alex's performance will be dedicated to the memory of Maureen Ryan whose generosity allowed the series to continue once the government funding was exhausted.

**Save The Date! Saturday 15 August 2026 at 3pm**

Numbers are limited to residents of Mt Wilson and Mt Irvine. Bookings will open in July.

Sarah Howell

---

## FEEDBACK AND SPRING EDITION

The Mounts is edited and compiled by Alison Halliday and Matilda Halliday. Your feedback and comments are always welcome, please send to [themounts2786@gmail.com](mailto:themounts2786@gmail.com).

The closing date for the Spring edition of The Mounts is **Friday 14 August 2026**. Please send submissions in Word format to [themounts2786@gmail.com](mailto:themounts2786@gmail.com). Images of local events, wildlife and flora are also welcome.

Contributions from members of the community are always welcomed – this is *your* newsletter. The email address for queries and contributions is [themounts2786@gmail.com](mailto:themounts2786@gmail.com).