

THE MOUNTS AUTUMN 2023

Community Newsletter of Mt Wilson and Mt Irvine

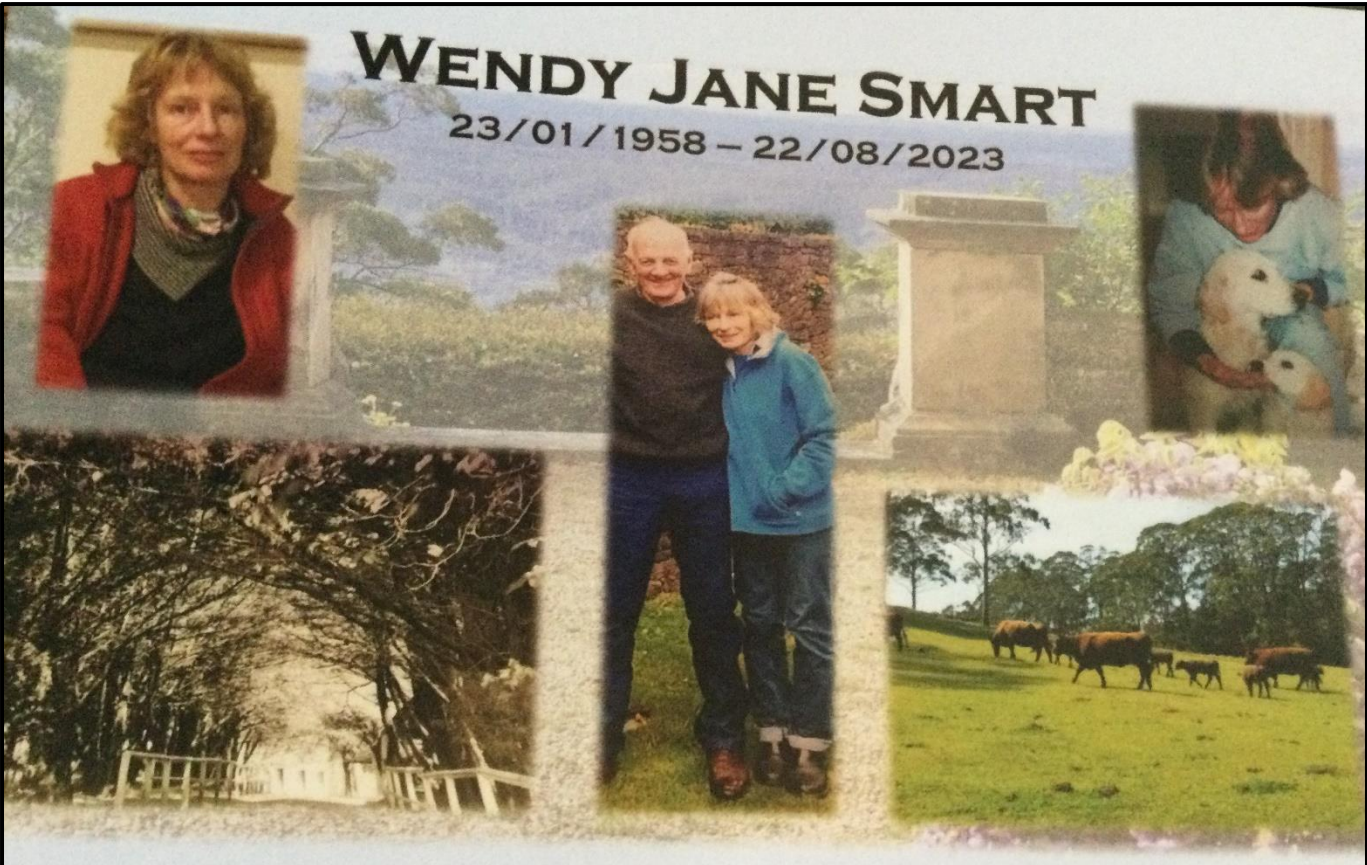
EDITORIAL

Towards the end of last year we were told that there was a good chance that the coming year would be hotter and dryer due to the effect of La Nina. The wetter-dryer, hotter-cooler spectrum is not simply a connection to El Nino or La Nina. It is not really surprising that weather and climate are more complicated and the systems driving it are more complex than one would think. The basic element is ENSO (El Nino – southern oscillation), one of the most important climate phenomena on Earth due to its ability to change the global atmospheric circulation, which in turn, influences temperature and precipitation across the globe.



Then climate change can be added into the mix and it seems anything is possible. On the Mounts though, I am sure there has been general agreement that rain, even with the humidity is preferable to hot and dry summers. Naturally there has been a knock-on effect in the garden with some plants relishing the extra rain, especially the hydrangeas. This summer has also seen a number of wonderful storms, with spectacular cloud formations. Enjoy it all while it lasts because change is certain, and often in ways we do not understand.

Rosie and Steven working hard for the splendid Christmas maintenance Friday dinner



WENDY JANE SMART

23/01/1958 – 22/08/2023

Forever in our Hearts

Wendy's family and her partner Keith, would like to thank everyone for their condolences & kind gestures of support, following her recent passing.

She faced her illness with her characteristic brave, stoic and dignified manner.

We have honoured Wendy's wish for privacy around her illness and also her request for a private farewell.

Wendy was a kind, thoughtful and gentle soul, who was humble in her achievements. She touched many hearts.

Wendy's ashes will be placed with her family at Mount Wilson.

Left to join the Angels

MWPA PRESIDENT'S REPORT

Had enough of the rain yet? I don't think I have ever seen Mt Wilson this green!

A few items to update you.

The MWPA met this week to discuss our priorities for 2024. We landed on three key projects along with the other work which we do.

1- The Tree Legacy Project

We will continue on our plan to refresh and maintain the historic avenues of trees In Mt Wilson. We will also continue to create new avenues and copses of trees where appropriate. If you have any suggestions, please contact James Douglas.

2- Beautification of Marcus Clark Reserve

As you know, we obtained a grant last year and were able to plant new trees in the Marcus Clark Reserve and as a community built a new stonewall. We will continue to explore other improvements to make this a gathering place for locals and a comfortable place to enjoy for visitors to the Mounts.

3- Community Well Being Project - This is a new initiative being kicked off by Susan Woolfenden and myself. We are exploring ways we can introduce new services to residents to improve our health and wellbeing and dare I say, resilience (which I think we have in spades!). Ideas we will explore include additional defibrillators, snake bite kits, visiting health services, and the like. If you have any suggestions or wish to assist, please let us know.

We will also continue with our work to improve our trailheads and wayfinding around the village. Peter Raines will be working on this and we hope to have some new signage for hikers and canyons this year.

We have also sent a response to the EIS for the Western Sydney Airport making some useful recommendations to reduce the noise to residents of the mounts. We thank Elizabeth Montano for spearheading this project and working with other neighbouring communities.

And lastly, watch your emails for an announcement for the next workshop in our Gardening Series. We should have a date shortly. The last one on propagation was very successful.

Maybe that's why the village is so lush these days?

Nancy Fox

MIPA PRESIDENT'S REPORT

Community Catch Up

At our February "Second Sunday Catch Up", we enjoyed a social morning tea/coffee and discussed items of interest to the community such as, the state of Mt Irvine Road, Bowens Creek Road community access, the removal of dangerous trees along Mt Irvine Road, and the formation of, in the terminology of the RFS, a "Farm Fire Fighting Unit (FFFU)" for Mt Irvine.

Mt Irvine Web Site

All development work for the first phase of our new website is now complete. Content is being added and the site should be launched during March.

Aircraft Noise

Western Sydney Airport

The joint MWPA and MIPA submission was successfully submitted. Our recommendation was to “fine tune” the flight paths in such a manner to minimise the noise impact to our communities whilst not adversely impacting others. You will be able to view the submission on our website.

Blue Mountains City Council

This is a continuing item. As a result of our November 2023 meeting, our BMCC Place Manager provided answers to all the items raised.

Items covered to date are: the provision of Satellite Wi-Fi for Mt Irvine Hall, removal and pruning of marked trees along Mt Irvine Road, repairs to potholes on Mt Irvine Road, support for the Rainforest Conservancy, Bowens Creek Road, and the “Village Sign.”

The BMCC web site has a useful “planting list” for Mt Irvine and Mt Wilson. Simply visit the BMCC website and search for “Planting list Mt Wilson & Mt Irvine”.

If you have any other matters relevant to Mt Irvine that you would like discussed with Council, please contact me.

RFS

New Mount Irvine Fire Station

BMCC has approved the DA for the new Mt Irvine Fire Station.

Commencement of work is now only dependent on the resolution of the current claim over the Mt Irvine Community Hall Precinct.

Allen Hyde

BUSHCARE NEWS

The January bushcare group met at Silva Plana, where we removed ivy, holly, blackberry and various other weeds and garden escapees. The rainforest is now largely weed-free and requires maintenance just once a year. It is pleasing to see many self-sown native rainforest seedlings coming up on the forest floor.

Tracy collected seeds from a *Prostanthera lasianthos* tree, the largest member of the mint bush genus. The seeds will be germinated and the seedlings used in bush restoration projects in the Blue Mountains. Ted Griffin’s golf cart came in handy for Tracy to reach the lower limbs of the tree!





The Mt Wilson Bushcare Group spend a few hours together each month helping to reverse the damage done to the environment by invasive weeds in bushland in Mt Wilson. During this time we carefully remove weeds and encourage native plants to grow, using the principles of bush regeneration to guide our work.

Many thanks again to the new recruits who are helping out with our efforts, much appreciated!

BMCC provides all equipment, including gloves, secateurs, spade, herbicide, kneeling pads etc. Those interested should

check the calendar on the Mt Wilson Mt Irvine community website to determine the location each month. There is a good chance there will be a delicious home-baked cake at morning tea! Please bring your own tea/coffee.

Bushcare is held on the second Friday of each month, between 9am and 12 midday. It is an enjoyable morning and a great way to learn more about the native flora including beautiful rainforest trees, shrubs and flowers.



For residents who are wanting to identify and control weeds in their gardens, the booklet "Bushland Weeds of Mount Wilson and Mount Irvine" can be found in the Bushcare section of the community website. The booklet is also available from the MWPA, if residents would like a free copy please contact Sue Woolfenden on 4756 2046.

Everyone is welcome, hope you can join us!

Enquiries:

Mt Wilson contact: Alice Simpson (0414 425 511 or 02 4756 2110)

Council contact: Tracy Abbas (0428 777 141)

Alice Simpson

RECYCLE TO SUPPORT THE RFS BENEVOLENT FUND

The RFS Benevolent Fund is helping ensure our members can receive the care and support they need – and deserve - at times of hardship and distress.



The Fund is providing compassionate, practical support to members and their families, including the families of firefighters who have been killed, injured or become ill as a result of their duties.

Our brigades and members can support the Fund's first fundraising campaign, which is aiming to raise \$100,000 by 21 April 2024 through the NSW Return and Earn recycling scheme.

Each bottle or can you recycle through Return and Earn can directly support our members in need.

Bags have been distributed to Fire Control Centres and some brigades to help collect eligible cans and bottles but you don't need a bag to take part.

Simply select 'DONATE' when using the Return and Earn machines or the app at Return and Earn depots and

choose Donate for a mate.

Please also encourage your families, friends and local community groups to join you.

Even if it's just a for a week or a month, every can and bottle brings the Fund 10c closer to its target of raising \$100,000 to help support our members who give so much to serve and protect our community

How you can help:

- **Collect eligible bottles and cans to recycle:** gather your empty eligible cans and bottles at home or within your community.
- **Visit the Nearest Return and Earn kiosk or other return point.** Locations can be found at <https://returnandearn.org.au/return-points>
- **Press "Donate" and choose Donate for a Mate:** When prompted by the machine or app, choose the option to donate the refund amount directly to the Benevolent Fund.

Nancy Fox

ST GEORGES' ANGLICAN CHURCH

Sunday service

Our church service is held on the 2nd Sunday of each month at 3pm, conducted by Tim McIver, our valued minister from Blackheath. The next service is on Sunday 10th March 2024. Everybody is welcome and we enjoy a friendly cuppa after the service.

Church Working Bee

The church working bee is now being held on the first Friday of each month from 9am until 11am. Anyone who is able to help would be most welcome and apart from the excellent company, morning tea is provided. Any queries please contact Helen Freeman 0418 430 071.

Mt Wilson & Mt Irvine Historical Society Inc.

ABN: 22 842 754 931



THE CAVORTING PUTTI OF SEFTON HALL

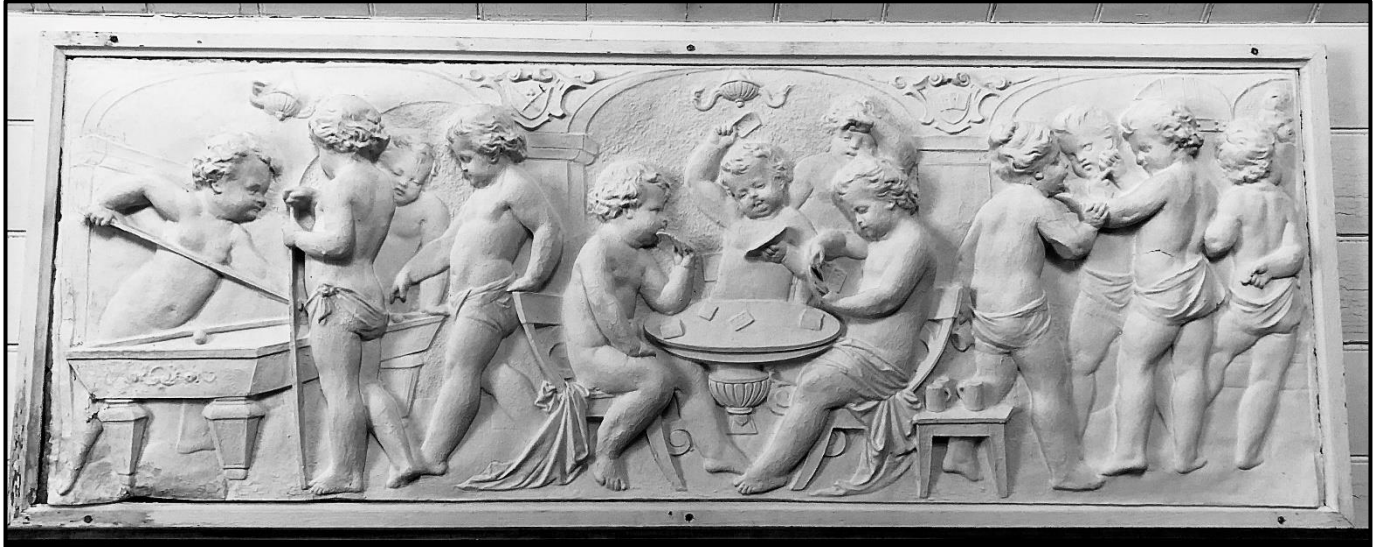
One of the more extraordinary and visually-engaging decorative features of Sefton Hall is the series of sculptural frieze panels that adorn the upper walls of the billiards room. Originally the living room of James Dalrymple Cox's 'Balangra', when Henry Marcus Clark purchased the property in 1910, he decided to retain Cox's large living room, transforming it into an elaborately re-imagined, freestanding gentlemen's retreat separate from the main house he was building. It has been said that Clark's wife, Georgina May, so detested Clark's pipe and cigar smoking that it was she who sanctioned this remote freestanding room for the postprandial activities of Clark and his gentlemen friends. (The remaining parts of Cox's cottage were not disposed of but transported to the west side of the property and repurposed as the estate's caretaker's cottage.)

The four ornately-detailed papier-mâché panels – executed in high-relief – were commissioned by Clark as a bespoke addition to the billiards room, purportedly designed and executed by Marcus Clark & Co's talented (and clearly creatively-minded!) team of Sydney-based window dressers.

Broadly, the depiction of putti can be traced back to the ancient classical world of art, having their origin in Greek and Roman antiquity (the latin word 'putus' means 'little man'). During this period, putti were a motif found primarily on child sarcophagi used *to celebrate the lives of deceased children and to give them some play and merriment in the hereafter*. Disappearing during the middle ages, putti re-emerged with gusto in the Quattrocento, an almost omnipresent feature in art and architecture during the Renaissance. By the 18th and 19th centuries, the



popularisation of romantic images turned putti into a popular emblem of love. However, putti are neither cupids nor angels; they are secular figures, which allows them to get into quite a bit of mischief. In Bacchanals, which were celebrations of Dionysius (Bacchus), putti represent *fertility, abundance, the spirit of the fruit of life*.



Sefton's spirited parade of Bacchic putti are seen cavorting in wild abandon, while being watched over by a classical bust of Bacchus in the corner of one of the panels. They dance gaily, playing cards and billiards, feasting, and canoodling, with plenty of wine to fuel the festivities. One cheeky putto can be seen straddling a large cask, while another dispenses its contents liberally. Musical instruments are played with gusto by dancing putti, creating the all-important Bacchic din, enhancing the intoxicating effects of the wine.



A cat and a monkey can also be seen weaving their way through the Bacchanalian high jinks, perhaps symbolic of the slightly darker and mischievous undertone of the scenes.

The naughty and rebellious putti appealed to the Victorians and Edwardians, offering some light-hearted vicarious relief to the stifling manners and social protocols of the age. Sefton Hall, the Clark family's relaxed escape from city life (with all of its associated stresses and social mores), would seem to be the perfect place to celebrate the joy of unguarded and exuberant play.



While we are looking closely at these panels, it is also worth noting the inclusion of a likeness of the Prince of Wales feathers at the very top of one of them, next to the raised hand of one of the putti. It was rumoured that Henry Marcus Clark was himself the illegitimate son of King Edward VII (then Prince of Wales). Clark's (blue) blood connection to the British monarchy was a rumour that he apparently never denied and one that he seemed to take pleasure in perpetuating. Is the inclusion of the feathers in these decorative panels a cheeky nod by Clark to this gossip doing the rounds of Sydney's polite society?

Peter Resanceff

TURKISH BATH MUSEUM: LIGHTS ON, DOORS OPEN

The Mt Wilson & Mt Irvine Historical Society is pleased to announce that it has been successful in securing a much-needed and appreciated stipend to help support the on-going running costs of the Turkish Bath Museum.

The \$2,000 payment is part of the '*Lights On, Doors Open*' stipend program, a funding initiative administered by Museums & Galleries of NSW on behalf of the NSW Government. The program aims to relieve the pressures faced by volunteer-led museums and Aboriginal cultural spaces in NSW. The Society is most grateful to Emily Cullen of Museums & Galleries of NSW for helping to guide us through the application process.

This success is a timely reminder to all residents, as well as their visiting family and friends, to drop by the Museum for a tour of this fascinating Mt Wilson icon, led by our knowledgeable and engaging historical storyteller, Des Barrett.

The museum is open on Sundays from 12.30 to 3.30pm. Feel free to drop Des a line if you are planning on visiting at historicalsociety@mtwilson.com.au.

Peter Resanceff

St George's Anglican Church



EASTER IN BLACKHEATH ANGLICAN PARISH

GOOD FRIDAY – 29th March 2024

8.45am St Peter's Mt Victoria (Great Western Highway)
(Communion Service)

10.30am St Aidan's Blackheath (Cnr Hat Hill Rd & GW H'way)
(Communion Service)

EASTER SUNDAY – 31st March 2024

8.45am St Peter's Mt Victoria – Morning Service

10.30am St Aidan's Blackheath – Family Service – Easter Egg Hunt

3.00pm St George's Mt Wilson – Communion Service

6:30pm St Aidan's Blackheath – Night Church

ALL WELCOME

Jesus said "I am the resurrection and the life. He who believes in me will live, even though he dies." John 11:25

THE OLD SCHOOL MT WILSON ARTIST IN RESIDENCE

During January we were delighted to welcome Frankie Dyson Reilly from Brisbane. Frankie is a musician, composer and visual artist.

She left a warm and generous thank you in the artist's book.

"I cannot put this month into words and manage to do this wonderful place justice. It's been a time of listening, learning, space, quiet, music, rest and – for the first time in many months- real creativity. The birds, the tree ferns, the rock formations, the cicadas, the wombats.....everything so quintessentially Australian and so vibrant, so lively. I've found my musical voice again in this place and I'm deeply grateful for it."

At her community event [see next page] Frankie told us about her composing using bird songs taped on her walks in the area. These she scores, without time signatures, are highlighted with the colours she sees for the music. She demonstrated on her keyboard with the score projected above for us to view and also with some recordings of previous work. Everyone in her audience was fascinated and we learnt so much.

That we are able to welcome artists and provide an environment to enrich their work is awe-inspiring and that they are so willing to share their output with us in a community event is truly enriching.

For February visual artist Anna Spence is staying at the Old School. Anna comes from Western Australian and has worked in the Pilbara. It will be so interesting to see her work from such a different environment here in Mt Wilson.

To get all the latest artist in residence updates follow the artist in residence program on [Instagram](#).



Judy Tribe

SOUND AND COLOUR

Frankie Dyson Reilly gave a fascinating talk in the Old School House on Saturday 25 January. Frankie's work explores the connections between sound/music and colour. She demonstrated a new form of notation that uses colour instead of the traditional notes. It is based on a computer programme and rather than the score being read and conducted from staves on a page it uses a red line moving across a rolling horizontal 'score' which shows various colours in different

intensities and patterns to replicate the sound. It was hard to listen to while not being distracted by the unfurling coloured score.

Frankie, with the help of her assistant-for-the-day played a work in progress on her keyboard that was beautiful. The sound echoed of the songs of local birds and it was sparse and gently melodic. She said that she had loved her time as artist in residence and talked about the number of birds and other wildlife she had seen. She was fortunate in glimpsing a tiny sugar glider on one of her evening walks.

Frankie has composed music for film, for video games, many small groups and bands and for the Queensland Symphony orchestra. She says she is passionate about 'imbuing light, colour and vibrancy within her music' and her audience was entranced by her methodology and her sound. She was happy to answer questions and expressed her joy at spending time in our lovely landscape.



Alison Halliday

UPDATE FROM YOUR RURAL FIRE BRIGADE

While the much anticipated 2023-24 fire season turned out to be a bit of a damp squib for us, we know that some areas elsewhere in the country have experienced devastating fires. And we really feel for those communities affected. Having been there - we know how tough it is.

The message for us? We keep getting ready for the next fire season.

Training on the first Sunday of each month continues. These sessions are valuable for both refreshing the skills of those who have been doing this for a while (we all keep learning) and assisting newer members and Bush Firefighter trainees to develop their skills and confidence.

For example, in January we practised door entry- that's where we will approach a building on fire and safely look to see if anyone's inside [see next page]. This is a skill taught in the Village Firefighter course and it's a great thing to practise given that we are a designated village fire fighting Brigade and are geared to be the first response to a building fire – it's a bit of a drive for the Blackheath/Mt Victoria Fire and Rescue to get to us – although, they can be very quick!

As we're always keen to increase the number of firefighters, we've got a brand-new batch of Bush Firefighter candidates working through their theory (the science of fire and firefighting is

actually really interesting) and practical requirements. We anticipate having a further 10 BF-ers within the next few months.



Our Crew Leader candidates have completed most of their assessments and are waiting for final assessments to be arranged by District Office. We're hoping they'll be fully qualified very soon.

Recently, our field officers (Captain, Senior Deputy, Deputies and Crew Leaders) all did a refresher on ITASC (which is the way you report to Fire Control on what's happening and what is needed at an incident) with other brigades from West Sector.

And on Maintenance Fridays (we hold them twice a month on the second and fourth Fridays), we've continued to keep all our vehicles in shape and ready to go with everything they need on them, including supplies for the crews. On a recent maintenance night, we replaced the bottled water on the trucks (yes – bottled water expires too) and made sure other supplies were all there. Our station officers have continued becoming experts at all the tech in the new extension to the Mt Wilson station. It's impressive.

In our last column I reported on the Automated External Defibrillator (AED) at the Mt Wilson station. It has now been installed in the station along with a big new First Aid Kit. And in more news on the safety front, the Brigade has purchased really great smoke masks for Brigade members – properly sized and for each member's own use – no sharing! That's another way we're getting ready to keep us all safe next fire season.

Even though we have a strong focus on “getting ready”, we have also had incidents we've responded to since I last reported. Our Community First Responders have responded to one call out to a community member and three callouts to assist with rescues; we've attended one Motor Vehicle Accident, we've dealt with one tree down (in addition to the various trees which members deal with themselves privately) and attended one escaped pile burn on Christmas Day (I hope the members who responded to that got extra Christmas pudding).

That's it for now. Keep safe, people.

Elizabeth Montano, Member of the Brigade Executive and WH&S Safety Officer

MOUNT WILSON VILLAGE HALL UPGRADE

The upgrade to the Hall is progressing well. The new large commercial kitchen has been built at the southern end of the Hall. It is to be equipped with a new stove, refrigerator, dishwasher and

associated sinks and storage facilities. The kitchen has been designed to cater for large numbers of emergency personnel over extended periods, particularly during bushfires.



The kitchen is accessed from the southwest corner of the Hall which also provides access to an external area adjacent to the kitchen. A servery allows food and drinks to be supplied from the kitchen to that area. The electrical mains supply will be underground, and a large generator is to be installed. The gas bottles and a water tank have been relocated to the eastern side of the building.

The Hall upgrade will also include a library locker and free high speed community satellite WiFi, as part of the Library2U project, an outreach service being established by the Blue Mountains Library for the bushfire affected communities of Megalong Valley and Mount Wilson. The project, funded by the Federal Government's Black Summer Bushfire Recovery Grants Program, will give residents ongoing access to the Library collection through library lockers located at community halls. Crucial communications upgrades will also be provided through the installation of satellite WiFi at the community halls. This free, ongoing internet access will support the Library2U service, and provide an invaluable community resource.

The Hall is to remain closed until 24th June to allow these works to be completed.

Ted Griffin

CONGRATULATIONS MARY HOLT OAM

Long time Mt Wilson resident, Mary Holt is proud to be a recent recipient of the Medal of the Order of Australia (OAM) announced on Australia Day. Her citation reads “For services to conservation and the environment”. An email glitch meant that Mary’s name was missing from the published list of recipients, but there is no doubt that her award is now official and will be included in the King’s Birthday list in June.

Mary and her late husband, John have been dedicated supporters of causes close to their hearts over many years concerning animal welfare and care of the environment. While John was President of the World Veterinary Association, John and Mary travelled widely, seeking out animal welfare organisations they could support. Over the years they adopted an elephant named Manau in Thailand, and have supported organisations caring for bears in India, hairy-nosed wombats in South Australia, koalas, abandoned animals in Australia and India, and numerous similar causes.

Since John died in 2013, Mary has continued the generous work they started together and continues to do so in his

memory. Mary’s generosity extends to the practical having recently adopted a generously proportioned rescue cat named Timothy from the Cat Protection League. Timothy and many other fortunate animals owe a great deal to Mary.

Sarah Howell

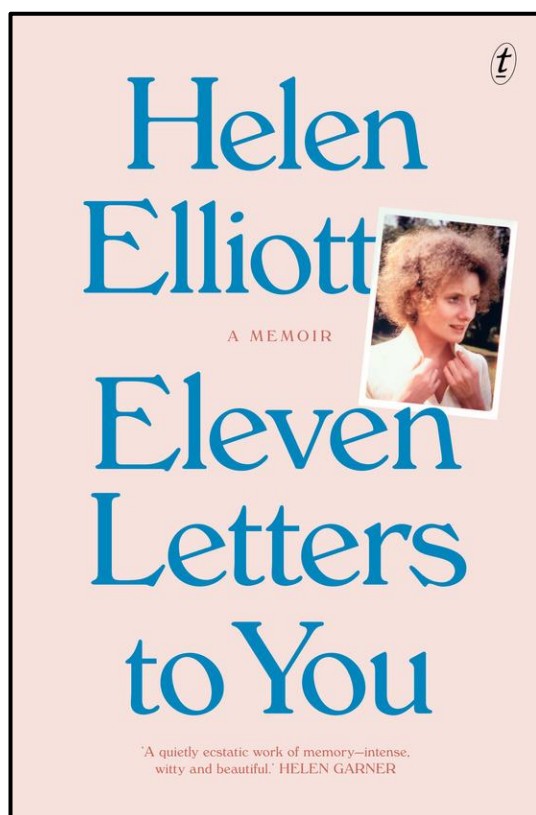


BOOK REVIEW

There seems to be a flood of memoir, biographies and recollections of childhood, all under the umbrella of ‘life stories’. It is interesting and illuminating to explore the life of another but sometimes the quality of the writing is not as good as it might be. This is certainly not the case with Helen Elliot’s *Eleven Letters to You*. Using the old and useful form of writing a letter Elliot addresses her letters to significant people from her childhood, teenage years and the time of being a young woman. These are people who had a important and lasting impact in shaping the adult Helen Elliot. They give her lessons in a worthwhile life and, more importantly, show how a life may be lived.

The first letter is written to her neighbours, the Misses Stapley, in Elsie Street, elderly sisters who lived together and adored Helen, giving her attention, respect and love. Helen was not concerned about them being old and wrinkled and she found their lives, their house and their

rituals of living engrossing. The other women are teachers, more residents of Elsie Street and colleagues. Helen often felt herself to be an odd child, desperate to fit in but hardly knowing how to. These were people who accepted Helen as she was and encouraged her to be true to herself as well as being kind and generous.



There are only two men directly addressed: one a colleague, an older man who worked as a manager in the Post Office and the other, Mr Corden, an older man, and a devout Christian. He said to Helen 'do not be a doormat'. All eleven people saw Helen very clearly and in turn she recognised their unique qualities.

The book is not only concerned with those she writes to but through the letters there are thoughts about the other important people in her life: her timid mother, her attractive father and Clive, her younger brother. Then there are the more incidental friends, colleagues and relatives. Elliot also considers the character of Melbourne and its new suburbs, and what it is like to grow up in the 1950s when the war seems to be still present. She also examines through her sharp young gaze the differing role of men and women, boys and girls, mothers and working women.

Elliot describes her role as being like a 'hinge' for the lives in the letters, and she opens the doors to a world viewed with clarity, love and humour. Alison Halliday

LUXURY CAMPING

Wanted good home for car-top tent. May need re-proofing.



Contact Alison Halliday
93891848 or Alex Halliday
0412 204 953

HEY HO THE WIND AND THE RAIN

January 2024 echoed the Shakespearean poem with 'the rain it raineth every day'. If you thought you were imagining just so much rain, here are some statistics. In January 2024 there were 24 days of rain according to the BOM. At Kirks Corner, Mt Wilson, we had 279 mm of rain making it the wettest January on record. In the last twenty years the previous highest was 222.2mm in 2022. On the wettest day 41mm come tumbling down.

Rain does not fall evenly across Mt Wilson and Mt Irvine. At Winninnie Graham Tribe recorded a January total of 236.8mm (or 9.3 inches in the old scale) The wettest day was Monday 15 January with 74mm being recorded. The following figures are based on measurements from 2006 to 2023. The wettest month there was in February 2020, climbing to about 575mm, the previous maximum for a month was in March 2021 at a bit over 500mm. The average highest monthly rainfall at Winninnie was 200mm in February. February has the highest average monthly rainfall (over the years of measurement) with 196.7mm (7.7 inches).

At a personal level it seems as though much of the recent rain has come in violent thunderstorms. These are sometimes accompanied by hail, and the cloud formations are spectacular.

Generally, we get rain in spring and autumn, but recent years have seen the expansion of high rainfall months. Winter is mostly dryish.

If anyone has figures that confirm or contradict these please let me know. It will be interesting to see the rainfall in the rest of 2024.

Alison Halliday

RECENT WALKS



December 15 - Farrer Road East - The Runners out to Picnic Point, return via the South side of Mt Irvine Road, Smiths Hill Circuit then from Farrer Road down the headwaters of Zircon Creek to Mt Irvine Road, out to Fields Selection then back across Zircon Creek and the rainforest gully back to Farrer Road East. Good mix of landscapes, rainforest, tree ferns, mountain ash.

Jan 19 - Joes Canyon and The Wollangambe River [left]- Walk into Joes canyon off track via the ridge below DuFaur's Rocks after completing the Chinamans Hat Circuit and looking at the grinding grooves at DuFaur's. Explore Joes Canyon then on the Beach at the Horseshoe for lunch and a swim in a fast flowing Wollangambe River.

Feb 16 - Birrabang Ridge - Explore Birrabang Ridge (Opposite Mt Wilson Turn Off) then onto Liversidge Hill with great views into a mist filled Grose Valley, returning via Birrabang Brook with a side trip into the upper part of Birrabang Canyon.



Walks for the next 3 months

March 15 - Asgard Swamp, Victoria Falls Road, Mt Victoria - visit Asgard Historic Mine & Kiln, Asgard Head, Thor Head Approx 10km. Historic Sites and high points overlooking the Upper Grose Valley. - Great Views.

April 19 - The Pavements Mt Irvine, explore an area of tessellated pavements out on the ridge off Mt Irvine between the Wollangambe and Bowens Creek, plus push out to the ridges beyond, good views and history, return via Knight Brown Fire Trail. 8.5km (11.5km including KBFT)

May 17 - Glow Worm Tunnel & Wolgan View / The Dry Canyon - Subject to NPWS finishing work and opening area. (Alternative walk Deep Pass & Natural Bridge)
Explore the recently revamped Glow Worm Tunnel walk, return via Tunnel Creek (Approx 3.1km) & visit Wolgan View / The Dry Canyon walk through dry canyon with great views over the Wolgan Valley (Approx 3km)

Walks run on the 3rd Friday of each month with Upper Mountains Bushwalking Club.

Peter Raines

FEEDBACK AND WINTER EDITION

The Mounts is edited and compiled by Alison Halliday and Matilda Halliday. Your feedback and comments are always welcome, please send to themounts2786@gmail.com.

The closing date for the Winter edition of The Mounts is **Friday 17 May 2024**. Please send submissions in Word format to themounts2786@gmail.com. Images of local events, wildlife and flora are also welcome.