

THE MOUNTS

Community newsletter of Mt Wilson and
Mt Irvine September 2021 Spring



EDITORIAL

Above is a photo of Curly and Waldo Halliday admiring the new cairn. Please send us photos of your furry or feathered companions during lockdown so we can pay our respects to them for their loyalty and love during this time.

We have only to go outside to be able to relish the early signs of spring – the scent of daphne and jonquils, the unfurling daffodils and hyacinths and the smallest leaves breaking out along the branches of the deciduous trees. It has been a cold and often windy winter but it is marvellous to see the transformation of gardens over a few weeks. Suddenly, it seems, everything is growing, greening and the air is softer and warmer. Spring is a potent reminder that nothing lasts forever, including contagious viruses and despondent spirits.

Enjoy our beautiful mountain sanctuaries and stay well.

APOLOGY

We offer our sincere apologies to Ann Pigott for mis-spelling her name in the Winter Issue and for adding a generation to the family. Of course, Sam is her and Peter's son, not grandson.

CONGRATULATIONS TO NANCY FOX AM

We send our big congratulations to Nancy Fox who was named a member in the general division in the 2021 Queens Birthday Honours for significant service to the financial and banking sector, and to women in business. We can now address Nancy as Nancy Fox AM.



MESSAGE FROM MWPA PRESIDENT

Well, here we go again with lockdown. I am amused by the exercise of my fellow village residents – walking, biking, golfing, gardening. Not such a bad place to be in lockdown but I feel we are all getting a bit weary of it. Bring on spring and vaccinations!

You may have heard the community has had quite a bit of success with grants from various groups. Recently we worked with BMCC and were awarded a grant from the Bushfire Local Economic Recovery Fund for new toilets with water tanks in Mt Wilson and some refurbishing of old ones. Watch this space as we work through the plans and locations with BMCC.

MWPA has also applied for a number of grants available for communities affected by the bushfires. Over \$30,000 has been granted for a range of programs that will be implemented in the near future. These include a concert series, a stone wall building workshop, a horticultural show and wellbeing programs for residents. As soon as we are out of lockdown we will be in touch as we schedule these events over the next year or so.

A new Visitor Information Board near the fire shed has also been funded and is going through the planning stages. We have also been working to get the road signs replaced which were damaged in the fires and have had some success but there are more to come. As ever, we have been keeping the pressure on for improvements to our roads and their gutters.

Unfortunately we had to cancel the new residents' morning tea due to the lockdown but hope to hold it as soon as we are able.

The MWPA Annual General Meeting is scheduled for October 9. Watch out for an email about what form it will take whether in person or virtual. It would sure be nice to share a glass of wine together!

Stay well!

Nancy Fox

MOUNT IRVINE PROGRESS ASSOCIATION (MIPA)

Mount Irvine Neighbourhood Safer Place (NSP)

The work to bring the Mount Irvine Public Hall up to NSP standard is now complete and final approval for its designation as a Neighbourhood Safer Place has been obtained. Consequently, a sign to this effect will now be erected in front of the Hall.

The following web site has useful information concerning NSPs:

<https://www.rfs.nsw.gov.au/plan-and-prepare/neighbourhood-safer-places>

Safety on Mount Irvine Road

Unfortunately, a Mt Irvine resident experienced another 'near miss' on Mt Irvine Road near Cathedral Reserve. A tradie, who was travelling at high speed towards Mt Wilson, rounded a corner completely on the wrong side of the road. In this case, details of the vehicle could not be obtained to allow follow up. Fortunately, apart from the shock associated with this 'near miss', no one was physically injured.

If you experience this type of incident, we are happy to follow it up on your behalf. Following up with Endeavour Energy resulted in their taking positive steps to educate their drivers and this is greatly appreciated.

When private contractors are involved, fruitful discussions such as these might not be possible but worth the try.

Again, we strongly urge all residents to always keep on your side of Mt Irvine Road and limit your speed to less than 50 kilometres per hour. This reduced speed increases the trip between the Mounts by less than two minutes. You might also choose to pass this information onto your visitors.

Council

Weeds

We continue to work with Council and Local Land Services to undertake further weed control on Mt Irvine. If you would like to highlight any area needing attention, please contact Allen Hyde for follow up.

Roads

Mt Irvine Road remains in a bad state. We continue to hold discussions with Council on this matter and hope that rectification work can be undertaken in the foreseeable future.

New Mt Irvine Fire Station

Discussions between the parties involved in this matter are continuing and it is hoped that a proposed site can be put to the community shortly. It is very much a work in progress.

Allen Hyde

11 NOVEMBER 2021

We do not yet know what will be permitted for this year's Remembrance Day, we will let you know as soon as information is available and this will be sent to all residents. Let's hope we can mark this important event in the usual fashion with a ceremony at the War Memorial.

ANNIVERSARY CAIRN

The cairn celebrating the 150th anniversary of the surveying of Mt Wilson has been erected at the Davies Lane end of The Anniversary Walk. This walk is above Mt Irvine Road, running outside the Wynstay fence. At the Turkish Bath end of the walk is the earlier cairn so the new one was designed to match it. Local basalt stone was used and the plaque includes a mention of Dennarque where the celebratory party was held, thanks to the generosity of Bill and Lata Moss. Between the two cairns many waratahs have been planted over the last few years so there should be a magnificent display of their flowers in spring, usually in early October.

Alison Halliday



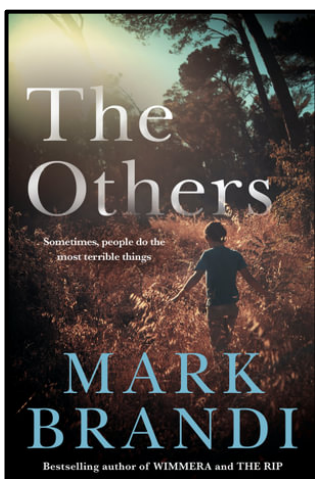
BOOK REVIEW

It is spring and trees about books are coming out of the woodwork (sorry). The Australian writer Inga Simpson has written a number of books that reflect her love of Australian trees. Her most recent is a marvellous picture book called *The Book of Australian Trees*. The title is the only aspect of this book that seems a little unoriginal. In writing about 14 native trees she touches on coastal regions and the inland, on the tropics and the cool temperate southern parts. She gives considerable detail on each tree from its bark to creatures that call it home, from leaves to its overall shape, from ancient links to Gondwana to those of strange silhouettes and odd habits.

The illustrations are bold and beautiful, done with great vitality and accuracy by Alicia Rogerson. People of all ages will love this book and it conveys its potent message gently. It should be on the bookshelf in every Australian home.



An earlier book by Simpson is *Understory* (2017). This too is structured through referencing Australian trees but this one is definitely for the adult reader. It is a memoir where each chapter is named after a tree and we are told about the habitat and growing habits of the tree and how it links to various stages, people and events in her life. For example several bangalow palms surround the cottage where she once lived, while a golden palm is by the front door. In this chapter we learn that Simpson's mother called palms 'architectural plants' and they were an intrinsic part of her childhood. Throughout there are references to writing, to earning a living, to studying and learning and to relationships of all types. Simpson writes with a light touch and she has a real skill in evoking the details of every place. One of the rare pleasures of being locked down is the opportunity for re-reading and this book is certainly one for that leisurely process.



For the crime lovers among us I have been engrossed in *The Others*, a recent release by Mark Brandi. I have not read his two earlier books, *Wimmera* and *The Rip* but I shall be seeking them out on the strength of *The Others*. It is narrated, in retrospect, by a boy who lives in isolation on a farm with his father. We only know what he sees and tells us but as adult readers we have more suspicions and awareness than a young boy and this creates a powerful sense of unease. The book is illustrated with naïve pencil drawings which apparently Brandi jotted down as the young narrator not expecting them to be in the published version, but here they are, and they certainly add to our understanding of the boy and the life he leads. As is so often the case with crime novels, to say more would be too revealing but I recommend this story with its immediate relevance to where we find ourselves today.

I bought *The Others* from Gleebooks in Blackheath who are open for phone orders to click and collect. They were very helpful with suggestions for a nine year old's birthday and I organised copies of the Miles Franklin short list on the basis that you can only re-read books so many times and sometimes we need more than crime!

Alison Halliday

CHANGE OF DATE FOR LOCAL COUNCIL ELECTIONS AND IMPACT ON ENROLLING FOR THE NON-RESIDENTIAL ROLL TO VOTE IN BLUE MOUNTAINS CITY COUNCIL ELECTION

In the last edition of The Mounts we reminded Mt Wilson and Mt Irvine landowners that, even if your primary residence is outside the BMCC local government area and you vote for local council elections somewhere else, you may still be eligible to vote in the Blue Mountains City Council election if you register on the non-residential electoral roll.

As a non-resident, you have to register to vote for each election.

The State Government has decided to delay local council elections until 4 December 2021. As a result the closing date for registering to vote in the BMCC election has been extended to 6 pm on Monday 25 October 2021.

You can register by simply filing out a form and sending it to BMCC. The form is on the BMCC website at <https://www.bmcc.nsw.gov.au/council/councillors-and-elections/elections>

Unlike some local government areas, BMCC has a system of wards, so our votes (few as they may be) are important and can influence election outcomes.

If you've already registered for this election, then there's nothing more to do than go along on 4 December, get that democracy sausage (COVID-19 rules permitting!) and vote.

So, if you want to be heard, then vote!

Elizabeth Montano

BUSHCARE NEWS

Bushcare has been suspended due to the lockdown. We look forward to its resumption, hopefully with some new bushcarers! Volunteers should check the calendar on the Mt Wilson Mt Irvine community website to determine when it resumes and for the location each month.

Bushcare is held on the second Friday of each month, between 9am and 12 midday. It is an enjoyable morning and a great way to learn more about the native flora including beautiful rainforest trees, shrubs, vines and flowers. Volunteers will be briefed on following Covid-19 safety protocols. It is now necessary to bring your own morning tea.

For residents who are wanting to identify and control weeds in their gardens, the booklet *Bushland Weeds of Mount Wilson and Mount Irvine* can be found in the Bushcare section of the community website. The booklet is also available from the MWPA, if residents would like a free copy please contact Sue Woolfenden on 4756 2046.

Everyone is welcome, hope you can join us!

Enquiries:

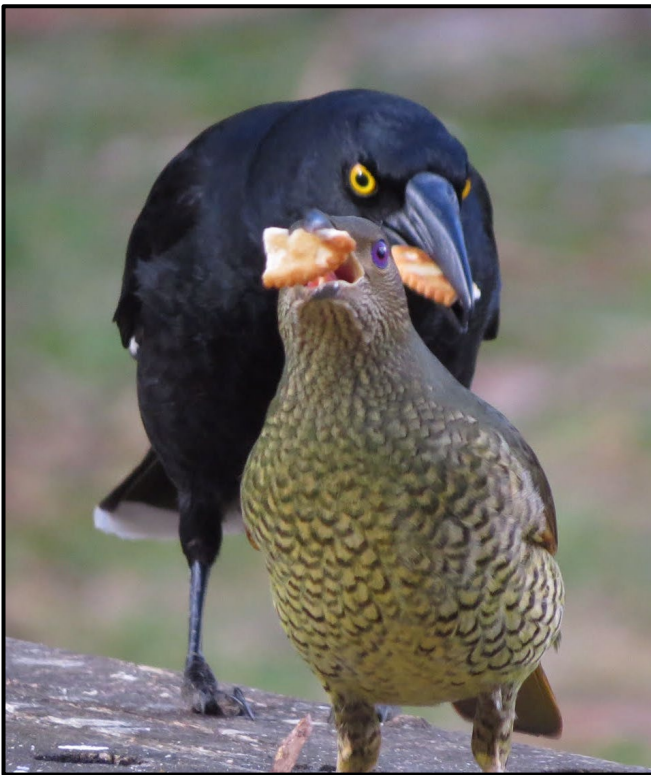
Mt Wilson contact: Alice Simpson (0414 425 511 or 4756 2110)

Council contact: Tracy Abbas (0428 777 141)

Alice Simpson

BIRDS

The golfing practise on Silva Plana has been closely supervised by a mixed flock of watchful birds.



THE OLD STEAM SAWMILL AND THE RAINFOREST TRAILS

During the 2019 bushfires a number of people were working down the steep rainforest slopes of the south side of Mt Wilson, these rarely trodden areas would not have seen so much activity since the timber cutting finished over 50 years before. As the crews worked down the incline to Waterfall Creek they crossed some of the historic foot and bullock trails from this previous era. These fires also burnt what was left of the old softwood sawmill. Despite the extremely dry conditions and the high fuel loads much of the rainforest areas did not burn. The areas that did so burnt relatively slowly but proved to be very difficult to put out. The fire burnt deep into the ground layer of accumulated leaf litter and broken down sticks, twigs and roots. Usually this layer is too wet to burn, but in the 2019 drought conditions it had dried out and once burnt the ash layer was ankle deep in places.

The area between Happy Valley and Cathedral is interesting to look at as an example of what the future may be for a burnt rainforest. It was an area with gums scattered through the rainforest, it burnt, but when there were no gums the fire stopped. The first 100m of the Happy Valley track shows this. In 1997 when upgrading the Happy Valley track this first 100m was very much eucalypt forest but over the last 20 years the rainforest has been pushing up towards the road and it has become more of a mix of rainforest and eucalypt. The fire stopped right at the old border where the eucalypt forest joined the rainforest.

Some of the dates and information below can be found in *Historical Paper No. 14 – Of the forests and timber sawmills – Teamsters and axmen in Mt Wilson* [available on the community website. Ed.]

The Kirk Family

Robert Kirk married Athelia Hempstead and they were among the earliest settlers on the mountain, his name is on the stone seat at Founder's Corner. Their son Sydney Kirk married Mary Marceau, whose story has been told in *All But One Went Home* by Kevin C Marceau. Their nine children were:

Sydney William (Sid)	1889
*Mary Constance	1891
*Athelia Louisa	1892
Herbert Charles (Bert)	1894
Vivian Clarence	1896
Albert Frederic	1897
Cecil Robert	1905
Eric Roy (Peter)	1908
Septimus Boyd (Tom)	1914

**The Kirk's two sisters Mary and Athelia died during the War years from pneumonia. Athelia is buried in St Georges cemetery; hers was the first burial in that cemetery.*

Sydney Kirk / Mary Marceau: Lived in a cottage on land leased from Jesse Gregson – (between Yengo's Parma Wallaby reserve and Breen's Workshop), later the sons built Noonameena on the corner of Wynnes Rocks Road for their mum Mary to live in, between Syd her eldest son (Coolangatta) and Tom her youngest son (Hollyridge).



Sydney and Mary Kirk with children at the first Kirk cottage

Sydney William (Sid or Syd): Built Coolangatta, on the corner of Wynnes Rocks Road and Queens Avenue and walked down to the softwood mill.

Herbert Charles (Bert): Lived at the Bebeah gardener's cottage (Bert's Cottage) in Waterfall Rd and he did blacksmithing at Wynstay as well.

Vivian Clarence: Lived in the area around Breen's workshop, owned much of the Farrer Road Land.

Albert Frederic: Built Kirks Corner (Hillcrest) and operated the softwood mill with Sid, he walked the steep rainforest from home to work.

Cecil Robert: Lived in Breenhold main house before selling to Breen and moving to Yurunga Mt Irvine.

Eric Roy (Peter): Built Milparra opposite the War Memorial, ran the hardwood mill at Cathedral with Tom

Septimus Boyd (Tom): Built Hollyridge (then known as Emoh Ruu) in Queens Avenue, ran the hardwood mill at Cathedral with Peter, also built Killaloo when he retired.

Tom's first wife, Joy, ran a tearoom at Hollyridge as did Alice Kirk at Breenhold, her brother was Jack Gunn, who lived next door and his wife Amy also ran a tearoom (Tulip Tree Tea Room) where Maple Lodge (Griffin's) now is.

The Softwood Mill

The mill was located on land owned by the Wynne's, portions 15 and 16 from the original survey, because on the south-east slopes of Mt Wilson were rich tracts of temperate rainforest with fine softwoods. It was not surprising that Richard Owen Wynne was prepared to lease this land to Sydney William George Kirk, a man from the war [WWI] and with some experience of timber, to set up a mill. The agreement between Syd and R. O. Wynne was that he and his brothers would have sole timber rights to cutting timber on his land while at the same time supplying Wynne with timber. It was not long before this mill became known as Syd's mill, and at least five or six of the Kirk brothers became involved; it supported six men after WWI. Wynne was paid a certain amount for the timber they took off.

The mill started in the early 1920s and closed in 1967 after Colonel Richard Owen Wynne passed away. Syd would occasionally mill a log for use on Wynstay (Syd passed away in 1971). I remember Tom still using the planer at the old soft wood mill in the 80s when he was building the Killaloo house at the bottom of the zigzag, shaping the weather boards and the tongue and groove flooring.



A view of the steam operated mill in the early days

The mill was initially steam powered, with a dam at the top of the second waterfall on Waterfall Creek supplying water down to the steam engine. It was later converted to diesel. During WWII the softwood mill was a busy place, supplying coachwood to the small arms factory in Lithgow for the rifle butt and stock of the 303 rifles.

The Tracks

Both Syd and Albert would walk down to the mill each morning from their respective houses. Syd's track ran direct down the bottom of Coolangatta on Wynnes Rocks Road. into Mill

Paddock and across to the mill. In later years he had an old model T truck with a down pipe for an exhaust pipe and no brakes. He would tow a log on his way up mill road, so in case he stalled, he could roll back on the log, this would enable him to leave the truck in neutral and get out to crank the truck to restart it. The story is that Mill Road was cut by three of the brothers two on shovels and one in front with a mattock.

Albert's track ran from Kirk's Corner in Hillcrest Lane, across the back of New Bywood and Linden, then traversing across some steep rainforest hillside before crossing Waterfall Creek and up to the mill. Albert used to carry a lantern in the winter months for his walk home. He would move it 100 yards forward every four days as the days got shorter and drop it off earlier as the days got longer so that he could pick it up just as it got dark on his return trip in the evening. (In early 2020 after the fires I found an old mattock on this track where Albert had been doing some track improvements on his way home.)

Mattie Davies also had a track to the Mill. He walked from Woodstock in Davis Lane down and across MerryGarth into the rainforest, eventually joining with Albert's track. Mattie Davies was Colonel Wynne's batman during WWI, and came out to Australia with his wife Flo after the war to be cook and butler for Wynstay. During WWII, everyone had to work for the war effort, so Mattie was sent to work at the small arms factory in Lithgow, and would board in Lithgow during the week. As someone who had been a domestic servant his whole life, working in a factory was very foreign to him, and his co-workers would have no doubt picked on him. Eventually Colonel Wynne managed to arrange for him to work at the softwood mill, as part of the war effort, so he could be home every night.



Bullocks were used to haul the logs to the mill, so as well as the footpads for the men to get to and from the mill there were also many log hauling tracks criss-crossing the rainforest to haul the logs back to the mill. There is still evidence of these tracks today, working their way up the slopes after crossing Waterfall Creek. Once on the steep slopes in the rainforest, it is not

possible to turn a bullock team so they would often bring them in on one track and continue though and out on a different track.

After the tree was felled, using bullock teams of 12, each log was hauled back to the timber dump next to the mill. At the mill the timber was debarked by an axe. It was then put through the frame saw (series of parallel saws cutting it vertically) which cut it in to flitches (large flat slabs). The flitches then went to the bench saw (a large circular saw) to be cut to usable sizes, 4x2 building timber or 1 inch boards for flooring, cladding, or weatherboards. Some lengths of timber would go onto a planer which cut and shaped items such as tongue and groove and weatherboard. Those logs not milled for locals on the mountain were taken to the rail head, at the station Mt Wilson Platform (now Bell). Bullock teams of 24 in 12 pairs were led by one man, hauling 15 tons of wood. The journey over 10 miles or 16km took two days allowing one day to return.

Syd's Lookout Tree

Sid had a tree spiked on Queens Avenue just above the driveway into Overcote, he climbed this to see the fireworks when the American Fleet came into the harbour. The stump is still there. There is also a stump in Gregson Reserve that has an old board niche in it from when it was felled. You can find some of Bert's old blacksmithing work in the gates and fences around Wynstay and Bebeah Cottage.

Peter Raines



FOR SALE

20 foot shipping container used for storing furniture, weather proof, \$2,950

Located at Windyridge Garden, Queens Ave, Mt Wilson

Contact Rodger on 4756 2019 or windyridge.mnt.wilson@gmail.com

NEWS FROM THE OLD SCHOOL MT WILSON



Snow on the School, June 2021, Sarah Howell

Artist in Residence Program

After our last artist of the 2020/21 intake, writer Julie Thorndyke, left The Old School at the end of June, it has been pretty quiet around the Teacher's Cottage. The period between intakes of artists is usually a busy time with short term holiday rentals, but the lockdown which started on 23 June resulted in the inevitable flurry of cancellations of all forward bookings. However, planning for the 2021/22 residency program proceeded with calls for applications going out in early June. Once again there was an enthusiastic response, and 28 applications over a range of artistic genres were received. After assessment by industry experts, six residencies have been offered and accepted for the period October 2021 to June 2022.

The first residency of the new program was awarded to Cadance Bell, a writer from Bathurst who will be working during November on a novel set in the Blue Mountains. Cady's memoir will be published by Penguin Random House in 2022, and she has also written for film and television. Her films include *The Rainbow Passage*, *Who I am*, and *Mirror Spider*.

Composer, vibraphonist, and educator Brad Gill arrives in December to be inspired by his connection with nature and his knowledge of the Blue Mountains.

Later residencies will be taken up by acclaimed writer Ariella Van Luyn; multidisciplinary artist Natasha Dubler who will be working across sound installation, music performance and small sculpture; Anna Glynn and Peter Dalmazzo who explore the intersection of art and science; and multi award-winning visual artist, Jennifer Keeler-Milne.

You can learn more about this diverse group of talented artists here: [Read the artist statements here](#).

Each artist-in-residence is hosted by a member of the community for the duration of their stay. This allows the artist a point of contact to answer any questions, but also offers an opportunity for the hosts to get to know the artist and to learn more about their practice. Past hosts have spoken enthusiastically of getting to know their artists over dinner or a walk around the garden and many enduring friendships have been established.

If you would like to host any of the above artists, contact Alice Simpson (email: alicesimpson2931@gmail.com mobile: 0414 425 511) who can tell you more about what is involved.

Alumni News

We take vicarious pride in the news that former Artist in Residence, harpist Emily Granger is a finalist in the 2021 APRA AMCOS Art Music Awards for Performance of the Year in the notated composition category. Emily was selected for her performance of *The Harp and the Moon* by Ross Edwards which she premiered in St Georges Church, Mt Wilson with her partner Tristan Coelho as part of their residency at The Old School. The awards will be announced on 24 August.

Support for the activities of The Old School

As our Artist in Residence program becomes more widely known, the number and calibre of applicants is growing over a wide range of artistic genres. The support of the Blue Mountains Cultural Centre and generosity of locals and donors allows the program to be self-funding in addition to rental income from the Teacher's Cottage. Cancellations due to the Covid lockdown have seriously impacted revenue, so please consider donating to the Public Fund of The Old School. All donations are tax deductible and can be made on the Mt Wilson website www.mtwilson.com.au by clicking the Donate button on the homepage. Your gift will go towards supporting the activities of the rejuvenated Old School while offering priceless opportunities to a range of artists to develop their practice.

Check out the community Facebook page <https://www.facebook.com/MtWilsonMtlrvine> for updates and further news of The Old School.

Sarah Howell

MT WILSON/MT IRVINE RURAL FIRE BRIGADE INFRASTRUCTURE

I would like to update you on some significant developments in relation to the Brigade's ongoing efforts to improve the infrastructure which is available to protect the community and its visitors.

Mt Wilson Shed

As you will already know, the Brigade has long sought to improve and extend the Mt Wilson Fire Shed to make it more fit for purpose.

This required:

1. Suitable Development Approval from Blue Mountains City Council;
2. The grant of a Crown Land licence over land surrounding the existing shed as the land title on which the shed is built is quite small; and
3. Funding.

The Brigade decided to take the lead on this project and, after a lengthy process, we were able to obtain the necessary Development Approval.

The grant of the Crown Land licence has recently been agreed with the assistance of RFS District Office and the required formalities are complete.

The last piece of the puzzle was the funding to pay for the project. While through the generosity of the community over the years the Brigade is in the fortunate position of having a substantial bank balance, that is not sufficient to fund this project together with the other things which the Brigade needs to do. Therefore, the Brigade needed to source additional funding.

Bushfire Local Economic Recovery Grant

The Bushfire Local Economic Recovery Grants programme operated by the NSW and Commonwealth Governments presented an opportunity to obtain additional funding for the extension of the Mt Wilson Shed. Because for various reasons the Brigade was not in a position to apply for this funding and to pursue the project on its own, a new incorporated body was formed for these purposes, Mt Wilson/Mt Irvine Rural Bushfire Infrastructure Inc, and it was that body that applied for the grant. A group of Brigade members makes up the membership of "Infrastructure Inc".

I am very pleased to inform you that NSW Deputy Premier John Barilaro and Commonwealth Minister for Agriculture Drought and Emergency Management David Littleproud have announced that the grant application has been successful.

Apparently, there were 650 applications lodged for this round of grant funding out of which 195 were successful. The grant amount is up to \$697,832, which is the amount that had been requested. Together with a co-contribution from the Brigade's funds, this will allow "Infrastructure Inc" to proceed with the Mt Wilson Shed project.

This project will substantially enhance the function of the shed as a community emergency services hub.

Water Supply

Separately from that project, the Brigade has been working with RFS District Office to arrange for the installation of an additional large capacity water tank adjacent to the Mt Wilson Shed. This should be done in coming months and will be funded by District Office.

The Brigade has also recently installed two new concrete water tanks, one in Church Lane, Mt Wilson and one at the end of Mt Irvine Road, Mt Irvine. These have been funded by a combination of small grants and Brigade funds.

The Brigade will continue to look at the provision of additional water resources over time. The objective is to try to avoid a repetition of the difficulties we had with water supply during the last fires.

Mt Irvine Shed

The Brigade is also advancing discussions with District Office in relation to the construction of a much needed new Fire Shed at Mt Irvine. District Office has indicated that this will be an RFS project funded from RFS resources. We hope to be able to say more about that later in the year.

Thank you

We have only been able to reach this position as a result of the efforts of a large number of people and continuing community involvement and support over a lengthy period. There is still much to be done, but we have every reason to look forward to significantly improved emergency services infrastructure in Mt Wilson and Mt Irvine.

If you have any queries, please feel free to get in touch.

Joe Montano, President/Deputy Captain



FOOD DELIVERIES

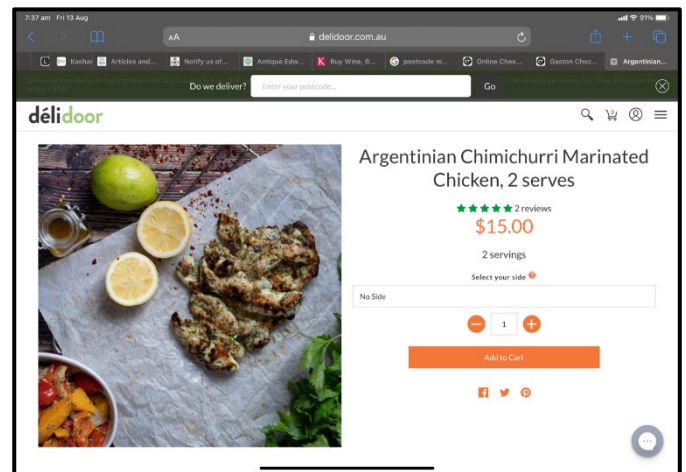
While we are in lockdown I thought it was worthwhile to share some organisations that will deliver contactless food and other necessities directly to the Mounts.

Hello Fresh, Marley Spoon and Dinnerly deliver on three days a week at different times. These three companies all work on a similar model of providing ingredients for meals which you then prep and cook. There are vegetarian and other options.

Delidoor is a smaller Australian company which works on a model of meals which are fully prepared or fully cooked and ready in less than 10 minutes - great for when you've been working in the garden and just want food now.

To round off the meal Cheese Therapy and Kemenys also deliver to the Mounts. Cheese Therapy has wine, chocolate and coffee options, and Kemenys has a deli section. Nespresso will also deliver here.

For other items, Officeworks deliver directly.



I have no connection with the companies and give no guarantees or endorsement but hope you may find them useful. I can't guarantee they will deliver to all areas of the Mounts but their websites say they cover the postcode.

Delidoor – <https://delidoor.com.au/>

Dinnerly – <https://dinnerly.com.au/>

HelloFresh – <https://www.hellofresh.com.au/>

Marley Spoon – <https://marleyspoon.com.au/>

Kemenys – <https://www.kemenys.com/>

Cheese Therapy – <https://www.cheesetherapy.com.au/>

Nespresso – <https://www.nespresso.com/au/en/services#/delivery/next-day-delivery>

Manettas – <https://www.manettas.com.au/> [seafood, meat, fruit/veg, and bread]

Matt Mason

~~~~~ FEEDBACK AND SUMMER EDITION

The Mounts is edited and compiled by Alison Halliday and Matilda Halliday. Your feedback and comments are always welcome, please send to themounts2786@gmail.com.

The closing date for the Summer edition of The Mounts is **Friday 19 November 2021**. Please send submissions in Word format to themounts2786@gmail.com. Images of local events, wildlife and flora are also welcome.

Contributions from members of the community are always welcomed – this is *your* newsletter. The email address for queries and contributions is themounts2786@gmail.com.