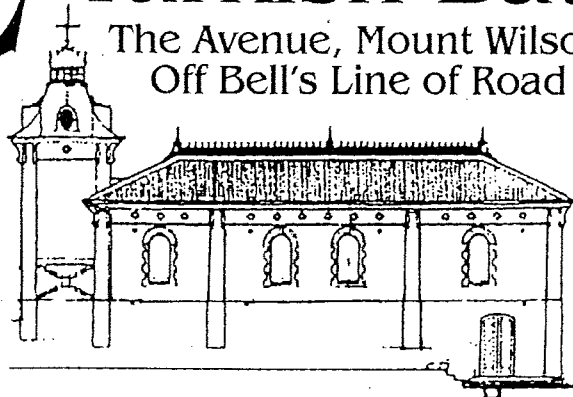


Mt Wilson and Mt Irvine Historical Society presents

# JAZZ at the Turkish Bath

The Avenue, Mount Wilson  
Off Bell's Line of Road



Two great  
bands

## The Bloweys

Multi-instrumental  
Traditional Jazz Group  
led by Bill Boldiston

and

## AYRES & GRACES

Renaissance Recorders, Crumhorns & Percussion

**Saturday 20 April 2002**

Gates open 12.30pm

Music 2.00pm - 5.00pm

**Entry \$15.00**

*Concession \$12.00 - Children free*

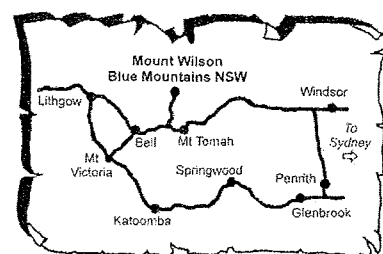
Includes free tea & coffee and tour of the Turkish Bath Museum

**FREE PARKING**

Sausage sizzle, BBQ, drinks and desserts available for sale

Bring a blanket and relax on the grass among the trees for an afternoon of  
quality music with the unique and romantic Turkish Bath behind you and  
the depths of the Wollangambe Gorge below.

All proceeds to the Mt Wilson and Mt Irvine Historical Society Inc.  
Contact (02) 4756 2006 or (02) 9489 2230 or (02) 9871 3661

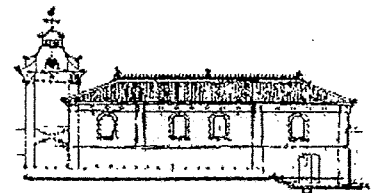


In case of rain, we'll be at: St George's Church, Mount Wilson

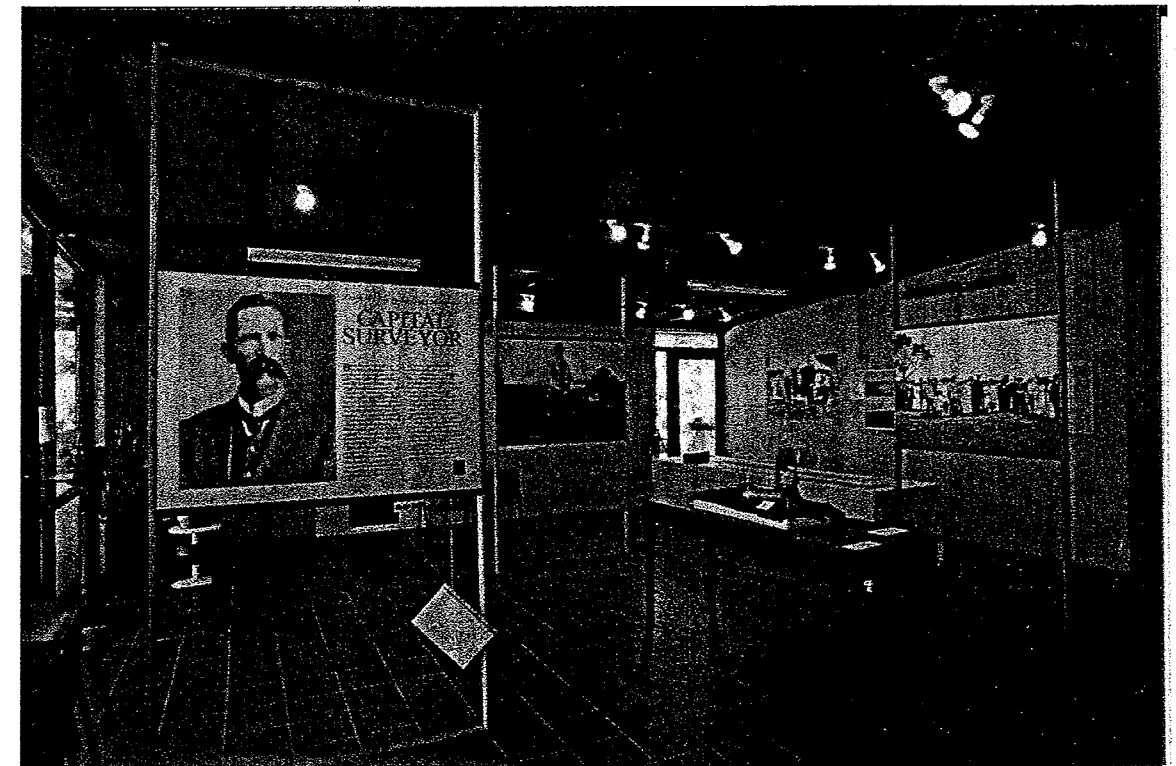
Number 8

March 2002

# Mt Wilson & Mt Irvine Historical Society



## 2001: Our Year of Exhibitions



### 'Charles Robert Scrivener—Capital Surveyor'

**A**t the opening of the 'Charles Robert Scrivener—Capital Surveyor' exhibition at the Mt Irvine Hall on October 20, 2001, Ian Shepherd from the Australian Surveying and Land Information Group (AUSLIG) said:

*'As I move around Canberra on my daily activities, I am constantly reminded of Charles Robert Scrivener and his wonderful achievements. The beauty of the Canberra environment makes his contribution to the site selection much appreciated. His layout of the city from the original design plans is a monument to his hard work and discipline. The little shed on the Parliamentary triangle is a reminder of his work. When I travel to golf every week, I pass over Scrivener Dam, named in his honour. Each day I work in the Scrivener Building, the current headquarters of the organization he founded. Today, his descendants at this event must be very proud of him, and as a Surveyor and a resident of Canberra, I can say that I am envious of you for having such a distinguished ancestor.'*

*Public organizations such as AUSLIG are not able to fund programs to research, document and publicise our own history. Thankfully, there are private groups, such as your Historical Society, that have the commitment and drive to undertake projects that keep our history intact and make it available to all the community in such an attractive and interesting format. The exhibition is the best display that I have seen on Scrivener's life and work. I commend it to all of you, and it gives me much pleasure in declaring the Exhibition entitled "Charles Robert Scrivener - Capital Surveyor", officially open.'*

Story continued page 4)

### From the President

There has been a regrettable gap between this and the last newsletter, partly because we’ve been looking around for a new editor, and partly because in the second half of 2001 the Society had such a busy round of exhibitions and other events that nobody on our small committee had time to breathe, let alone try their hand at producing a newsletter! It was the busiest run of significant and successful events the Society has had. And that’s saying a lot, when you think of: our opening Wynne Prize Centenary Exhibition in 1997; the “Mountains to the Sea” Art Exhibition in 2000; the Craft Exhibition 2001; the Wynstay garden openings from 1996 to 1999, and at least four different thematic exhibitions of local history in documents and photographs on display in the Turkish Bath Museum since it first opened. And then, there are the annual jazz concerts that bring so many members and friends together under the marvellous trees of the Turkish Bath Museum precinct, not to mention the two general meetings held each year, both with eminent speakers on topics of great historical interest. Since your last newsletter arrived you will also have received Number Two of our series of historical papers, this one by Judge Ken Carruthers, resident of Mt Irvine, writing about some prominent political and legal luminaries who had lived in the Mt Wilson/Mt Irvine district. Number Three is already in the pipeline, on historical links between Mt Wilson and Mudgee –coming soon!

This newsletter covers the period from April 2001 till now, with brief coverage of: the Kirk Exhibition (of intense local interest); the Scrivener Exhibition (of national as well as local interest, especially for C.R. Scrivener’s work in surveying the site of our national capital); the grant of \$35 000 for further work on the restoration of the Turkish Bath Museum; the change in scope and name of the Society itself, to include Mt Irvine as well as Mt Wilson, and much more.

The Turkish Bath Museum is now open to visitors on Sunday afternoons, until 4 o’clock, from February through May, and the level of public interest is very satisfactory to us. We look forward to seeing all our members during this period, especially those who do not live locally. Please call in to see the Turkish Bath Museum again as we come ever closer to completing restoration work on it.

Our next jazz concert will be on 20 April 2002\*. Bill Boldiston will again be here with his marvellous band of ‘Bloweyes’. Jeannie Hope will be there too, absolutely our favourite jazz trumpeter. This time we’ll also have a second band, presenting a program of early music, with renaissance recorders, crumhorns, a spinet and percussion, expertly played by some of Sydney’s best players. All in the open air, under those wonderful Wynstay trees and in sight of the great Wollongambe Gorge! We have all this to offer, plus a tour of the Turkish Bath Museum and its current exhibition. So, bring a party of friends, and enjoy the hospitality of the day! Visit local gardens too, as it happens also to be the special opening day in several gardens for the Greystanes Children’s Home. So make a day of it, lunch and all. ‘But look,’ as Peter Cundall of the ABC Gardening Show says, ‘there’s more!’.

WE HAVE A WISH LIST. Maybe there is some way you can help, either by donation (tax deductible) or by giving us some of your time, your skills, even your things. Apart from our elected committee of nine, we also have a number of sub-committees always looking for additional members: fund-raising, publicity, exhibitions, archival work (training available), collection management, grounds and gardens, etc. In addition, we need more volunteers who are familiar with the Turkish Bath Museum or skilled in taking visitors’ admission money. Have you any particular talents, energies, inclinations, suggestions, or money to contribute to any of these? Please make something more of your membership of this flourishing society! Contact any member of the Management Committee for more information, and to volunteer! It is always nice when one of our members gets some special recognition for historical work. Our warmest congratulations go to Elly Gunn and her three co-authors who recently received an award in the Lithgow Australia Day honours list for the launch of their highly successful book on the history of the Lithgow Cooperative Society. The book is now getting its second printing—success indeed! There are a few mountain people who still remember the Co-op and its weekly visits to supply the household needs of Mt Wilson and Mt Irvine residents. You’ll see from the list of names of people on the Committee, on page 15, that Elly is now an elected member. Welcome and congratulations, Elly.

Finally, warmest thanks to Leith and Darrel Conybeare and to Florence Smart who, between them, put this Newsletter together without any of them claiming to be the editor.

Arthur Delbridge

\*See back cover for details

### Two brief Statements from the Treasurer

Balance of accounts as at 26.08.2001	\$16 420.98
Income for period 27.08.2001 to 31.01.2002	9 843.64
Total as at 31.01.2002	\$26 265.62
Expenditure for period 27.08.2001 to 31.01.2002	17 352.64
Balance shown in Accounts Book as at 31.01.2002	8 911.98
Balance shown in corresponding Bank Statement	8 996.98
Difference	85.00

Explanation: Three (3) cheques drawn, but not presented: \$85.00

On 8<sup>th</sup> January 2002, the Penrith Branch of the Australian Tax Office rang to make an appointment for one of its officers to carry out an audit of the Society’s Accounts. A date was arranged for eight days later.

The audit, which lasted for over four hours, was both exhaustive and exhausting. Some sensible and practical advice was given, and our books were found to be accurately and comprehensively kept.

The treasurer would especially like to convey his warmest appreciation to David King of Geoffrey Finall & Co, Lithgow, for having been present throughout. Furthermore, David declined any offer of recompense for his most welcome support and undoubted loss of income.

The President has sent a letter of appreciation to David and we are sure that all members of the Society will join us in thanking him for an action ‘above and beyond the call of duty’.

Ellis G Reynolds (Treasurer)  
1<sup>st</sup> February 2002

### 2001/2002 Management Committee & Sub-Committees

Chairman: **Arthur Delbridge**  
Executive, Finance Committee, Editing Newsletter & Historical Papers, Turkish Bath Volunteer  
Vice-Chairman: **Darrel Conybeare**  
Executive, Newsletter, Publicity, Design, Mt Wilson Village Hall, and Grounds  
Secretary: **Mary Reynolds**  
Executive, Collection Management, Archival Storage, Research, Exhibitions, Turkish Bath Volunteer  
Treasurer: **Ellis Reynolds**  
Executive, Finance Committee, Turkish Bath Volunteer

Committee Members:

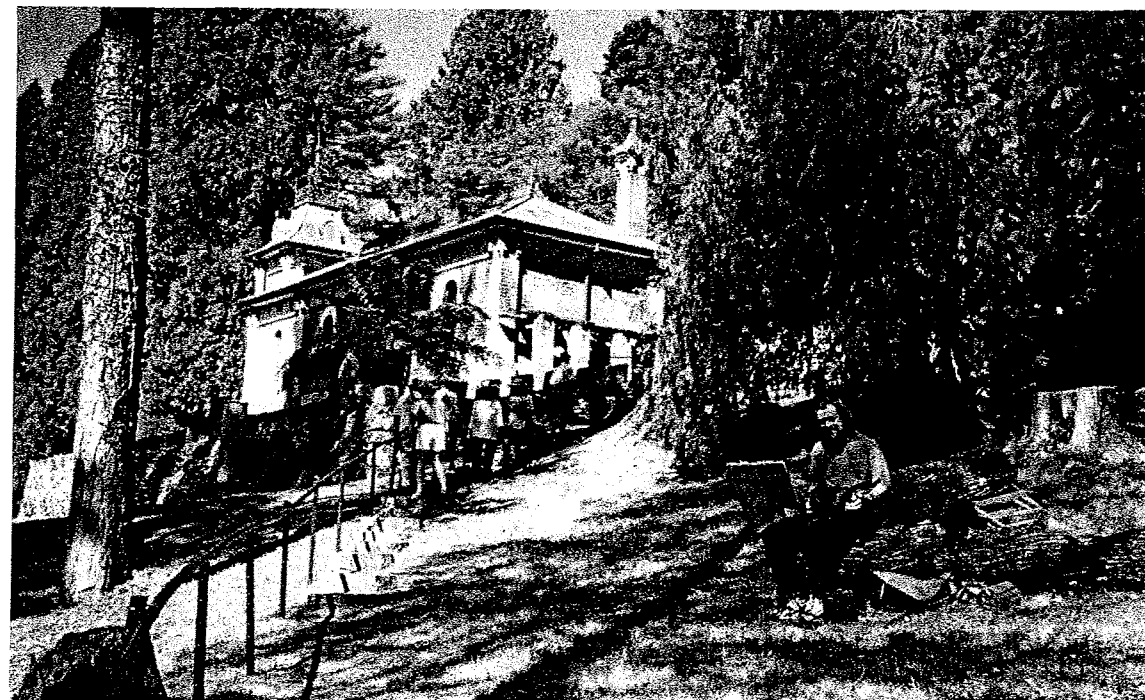
<b>Helen Cardy:</b>	Fund raising, Exhibitions, Collection Management, Turkish Bath Roster, Volunteer
<b>Elly Gunn:</b>	Fund raising, Oral History, Mt Irvine Research
<b>Robin Leonard:</b>	Fund raising, Exhibitions, Research, Grant Applications
<b>Florence Smart:</b>	Fund raising, Publicity
<b>Bruce Wright:</b>	Project Director for the Turkish Bath, Finance Committee, Grant Applications Turkish Bath Volunteer

Sub-Committee Members:

<b>John Cardy:</b>	Fund raising, Collection Management, Turkish Bath Volunteer
<b>Helen Freeman:</b>	Fund raising
<b>Eva Gaddes:</b>	Turkish Bath Volunteer, Landscape Group
<b>Richard Knight Brown:</b>	Maintenance, Special Events
<b>Pauline Michell:</b>	Fund raising
<b>Libby Raines:</b>	Fund raising, Landscape Grounds Advisor
<b>Julia Reynolds:</b>	Fund raising, Turkish Bath Volunteer
<b>Wendy Smart:</b>	Fund raising, Garden, Landscape, Archival Collection



*PART OF THE "SEVEN GOOD MEN" EXHIBITION*



*CROWDS ARRIVING AT THE "SEVEN GOOD MEN" EXHIBITION*

## Seven Good Men Exhibition

The Kirk family members have stood out as remarkable figures throughout the settlement history of Mt Wilson, much admired, especially by those who knew them best. One of these admirers is Lesley Wynne who found a way of honouring the family and its many contributions to Mt Wilson life. An artist, she planned a special project for her current Fine Arts course at the University of Newcastle: namely, seven portraits of the sons of Sydney and Mary Kirk, the 'Seven Good Men'. With the support of a Centenary of Federation Community History Grant, the Society exhibited the portraits, with accompanying photographs and Kirk memorabilia, in the Turkish Bath Museum as its other major exhibition for 2001. Mr Jim Angel, Mayor of the City of Blue Mountains, opened 'Seven Good Men'. Lesley Wynne conducted the formal proceedings at the opening with her usual flair, and contributions graphically reminding us of the past came from Mervyn Wynne, Helen Robbins and Councillor Terri Hamilton.

Janet Foggett, daughter of Albert and Ruby Kirk, gave an eyewitness account of this excellent exhibition.

*Artworks, which form the nucleus of the exhibition, were produced by Lesley Wynne as part of a Bachelor of Fine Arts Degree, studied through the University of Newcastle. The artworks, one of each of the 'Seven Good Men', are individually framed with timbers grown at Mt. Wilson and milled by Tom and Peter Kirk. Handmade paper dyed and infused with Mt Wilson bracken fern, lichen and moss was used as mounting boards.*

*Numerous items belonging to many of the 'Seven Good Men' are also on exhibition, together with an excellent display of photographs of them and their families, taken over approximately one hundred years.*

*The Kirk family is a significant family in the history of Mt Wilson. Robert Kirk came to Mt Wilson in the 1870s. His son, Sydney, married Mary Marceau and raised a family of seven sons and two daughters.*

*The exhibition is a tribute to the lives of these men and the lasting contributions they have made to the history of Mt Wilson. Two of the brothers, Cecil and Peter, are still living.*

*Sunday 30 September 2001, a beautiful Spring day, saw the opening of the exhibition by the Mayor of the City of Blue Mountains, Mr Jim Angel. The major presenters were Lesley and Mervyn Wynne who gave vivid and often amusing anecdotes of their early days on Mt Wilson, their association with the Kirk men, and of the roles these men played in the lives of so many of the families living on the mountain.*

*Peter Kirk and his wife Johnnie, Ruby (Albert's wife), Alice (Cecil's wife) and Tood (Tom's wife), and several generations of the Kirk family, were present and expressed their appreciation of the recognition and honour paid to the Kirk family. Many present and past residents also enjoyed the day.*



On the verandah and magnificent lawns of Wynstay, Wendy and Anne Smart hosted a wonderful afternoon tea, which was a fitting conclusion to a very successful function. Richard Evans and Eva Gaddes provided an excellent musical background. Our thanks to the many members and friends who contributed time and energy to make such a successful occasion.



## Local Art and Craft on Show

In Autumn 2001, we mounted an unusual and striking exhibition, this time a cooperative effort from within the communities of Mt Irvine, Mt Wilson and Mt Tomah. A wide variety of hand-made items, including fine paintings and other decorated items, turned and carved woodwork, fibre arts of all kinds, products from the kitchen and garden, were displayed in the Turkish Bath Museum in the largest and most diverse show and sale of locally produced items ever presented in our community.

It took a great collaborative effort from a large number of artists and artisans living in our three communities to organise, set up and then staff this week-long exhibition of knitted, woven, embroidered, carved, grown, painted, decorated and assembled products. And it was one of our most popular and successful events, bringing hundreds of visitors. Many came to admire and purchase the excellent handmade items, and many others came to see the Turkish Bath Museum building itself. Both groups were doubly pleased to find such a high standard of art and crafts in this unique gallery setting.

The show was a financial success, for the people who made the products as well as for the Society. Our warm thanks to everyone who participated, not only by exhibiting their work but also by helping with the setting up and staffing. Particular thanks to Wendy Holland for directing the display and to Elizabeth Mason for managing the roster and keeping track of the sales. Congratulations all round!

## C R Scrivener—Capital Surveyor, continued from page 1

On Saturday, October 20, more than 100 residents and guests gathered at the Mt Irvine Community Hall for the opening of the exhibition entitled 'Charles Robert Scrivener—Capital Surveyor' in honour of a man whose work has inspired many thousands of Australians and, ultimately, delighted many more who would be unaware of his contribution. Members of the Scrivener family were present at the gathering, along with the NSW Deputy Surveyor General, Paul Harcombe and the Manager of Australian Remote Sensing, Ian Shepherd of Canberra.

Retired Associate Professor of Geography, Terry Birtles, read detailed accounts of Scrivener's life, revealing the surveyor's sharp wit and his disciplined attitude to life. 'Scrivener was a man who, besides being eminent in his profession, had a strong personality,' a contemporary wrote. 'He was frugal, indomitable, a martinet, but also genial and lovable.'

Charles Robert Scrivener was born in 1855. His professional training was as a surveyor. He surveyed Bells Line of Road, and in 1897 he surveyed Mt Irvine recommending its dedication as a National Park, without success. During the period 1900-09, Scrivener explored, reported, surveyed and mapped nominated sites for the future Federal Capital. As the first Commonwealth Director of Lands and Surveys, he carried out selection studies for Canberra and surveyed that site in 1910.

In 1915, he retired to Mt Irvine, where some members of his family still live. Among other things, he devoted his retirement to improving the road to Mt Irvine and designing and building his own house and garden in this beautiful location. Scrivener died in 1923.

Another of the speakers, Mr Keith Cadogan, said of Scrivener:

*Most of us have heroes—people we admire and who inspire us. In Australia, they tend to be sportspeople. I have a small number of heroes, and Charles Robert Scrivener is one of them.*

*As a very young man, I worked for 3 years in Canberra where he had left an indelible stamp in terms of survey control systems, and where I was using measuring techniques and equipment that he had devised and which were unique.*

*When I was much older, I spent some 25 years, on-and-off, following him up in many still relatively remote areas in very difficult country in parts of the Great Dividing Range and in the river valleys of the Hawkesbury, Colo and Macdonald Rivers. In many of these places, there had been little or no survey work since he had been there 100 years before me.*

*After I retired, I found time to write a detailed technical tribute to him, which was published in 'Azimuth', the New South Wales Surveyors' monthly magazine.*

*It was my pleasure to be able to assist in preparations for this day and to take part, and I applaud the Mt Wilson and Mt Irvine Historical Society Incorporated for sponsoring and organizing this function and this Exhibition..*

Gratifyingly, the life of this exhibition is by no means over. It moved from the Mt Irvine Community Hall to Mt Tomah Botanical Gardens, where it was on display throughout December 2001, and there is further interest in it being shown in Sydney and Canberra. A great deal of the material uncovered by research in the formative stages of the exhibition is now going into the archives of our Society.

## Scrivener Plaque

Mr Bill Scrivener, Miss Ruth Scrivener and Mr Stephen Scrivener unveiled a plaque commemorating their grandfather, Charles Robert Scrivener, for his contribution to Australia as the First Commonwealth Director of Lands and Surveys, and his life in Mt Irvine. The Blue Mountains City Council financed the plaque as its contribution to this Centenary Celebration. The afternoon tea was superbly organised by Jim Tzannes and Annie Catling, members from Mt Irvine. Flowers and gifts were given to the speakers, participants and their partners. \$10 was charged on the opening day to all but the invited guests. This brought in about \$850 on the day. A raffle of a print by Kathy Harrington was conducted and ~~will be drawn today~~, 24th November. The exhibition remained open on Sunday 21st, Saturday 27th and Sunday 28th October and Saturday 3rd and Sunday 4th November 2001 with \$4 as the entry fee. The total amount taken for the Exhibition, including the raffle, ~~is~~ around \$1 890.

We are very pleased that the Exhibition ~~will be in~~ the Mt Tomah Botanic Gardens from 1st December 2001 until the end of December. Rob Smith, the Director at Mt Tomah, ~~has been~~ most helpful, as ~~has~~ Karen, the Marketing Officer. Negotiations are underway for it to be considered for display ~~in the State Library and later in the National Library in Canberra.~~

The Society applied to the Museums and Galleries Foundation of NSW for a grant to help with the cost of materials for this Exhibition. It ~~is to~~ receive \$600 contribution towards those costs, ~~which will be considerable.~~

Our gratitude and appreciation to all those who made this outstanding event possible. Furthermore, the Society believes that the two communities of Mt Irvine and Mt Wilson have been strengthened and brought closer together through the celebration of the life of C R Scrivener. His character and professional achievements have left a remarkable legacy.

The Society now has, through the research undertaken by Suzanne Mitchell, an impressive amount of material related to Charles Robert Scrivener. This material will be placed in our Archives Library.



CENTENARY of FEDERATION 2001  
To commemorate the contribution of  
**CHARLES ROBERT SCRIVENER**  
1855 -1923  
the First Commonwealth Director of  
Lands & Surveys who selected and surveyed  
the site of the national capital 1910.  
He surveyed Mt Irvine and district becoming  
a resident in 1915 following his retirement.

## Opening Dates for the Turkish Bath Museum, Autumn 2002

The Turkish Bath Museum is open to the public from 1pm to 4pm on each of the days listed below.

We would be very grateful to any Society members who could help by volunteering on one or two days during this season. If you are concerned that you do not have sufficient information to be on duty we will always help you with printed information and/or conduct a brief workshop in the Turkish Bath Museum to provide that knowledge.

Please contact:— **The Secretary, 20 Church Lane, Mt Wilson 2786; Tel: 4756 2006**

**Or:— Helen Cardy, 14 Gum Grove Place, West Pennant Hills 2125; Tel: 9871 3661**

Time of each Opening Day is from 1.00pm to 4.00pm

DATE	DATE
Easter Sunday 31 <sup>st</sup> March	Anzac Day Thursday 25 <sup>th</sup> April
Easter Monday 1s April	Sunday 28 <sup>th</sup> April
Sunday 7 <sup>th</sup> April	Sunday 5 <sup>th</sup> May
Sunday 14 <sup>th</sup> April	Sunday 12 <sup>th</sup> May
Saturday 20 <sup>th</sup> April— <b>Special Event—Jazz</b>	Sunday 19 <sup>th</sup> May
Concert at the Turkish Bath Precinct	Sunday 26 <sup>th</sup> May
Sunday 21 <sup>st</sup> April	

## Labour of Love Brings Lithgow History to Life

In 1996, four Lithgow women confronted six cardboard boxes overflowing with unsorted and neglected documents. The boxes contained the material remains of the local workers' cooperative society, which had closed its doors 16 years earlier.

It was not a promising start to their project to write a book on the Co-op, which for many years was central to life in this battling workers' town, west of Sydney's Blue Mountains. Aged 58 to 63, the group was not well equipped to meet the challenge – they readily confess to being 'educationally challenged', having completed only basic education in their youth. But they diligently set about updating their skills and knowledge, and devoted endless hours to the labour of love that saw their dream become reality.

The result is *The Life and Times of the Lithgow Co-op Society, a Social and Industrial History* – a 260 page book which charts the story from the co-op's faltering start in 1891, through boom times this century as Australia's biggest co-op, to its financial demise in 1980.

The book contains many fascinating original photographs from Lithgow's past as well as personal anecdotes and account of the co-op's role in the town and region's life. Published by the women with funding assistance from the NSW Centenary of Federation Committee, the book went on sale early this year. All 300 initial copies were snapped up quickly and a second print run is under way.

The authors, June Jenkins, Elly Gunn, Lorraine Ryan and Gloria Phelan, have all lived in Lithgow for many years and each at various times worked for the Lithgow Co-op (the Co-ey to locals).

Along with many other Lithgow locals, they recall the Co-ey fondly as an institution that helped battlers obtain life's necessities, and a few luxuries, at affordable prices. Many locals held shares in the Co-ey, which traded on through good times and bad in the gritty town, once known as 'Australia's Birmingham', where Australia's steel industry was born early this century.

While the town's fortunes fluctuated, along with the mining, light manufacturing and railway industries on which Lithgow's economy was based, the Co-ey was always there to lend a helping hand.

The idea for a book arose at a 1996 reunion of several hundred former Co-ey employees in Lithgow. June, Elly, Lorraine and Gloria realized they had to act quickly, before memories and old photos faded and the past was lost forever. In the local library, they found cardboard boxes full of Co-op minutes and reports. Painstakingly raked over, these documents formed the basis for their history. During the next four years, they collected information, stories and pictures from locals who had connections with the Co-ey. But the four women found the task overwhelming and made slow progress until they approached the Lithgow College of TAFE for help.

The college helped them to improve their English skills, introduced them to computers, assisted them in organizing and editing the book and gave them the confidence to approach sponsors and a publisher.

"Never think you are too old," the authors say in the book's prologue. "Not only did we learn how to write our book, but also the basics of computer use, and a whole new world of information opened up to us." Their inspiration was the need to commemorate the Co-ey, which regularly aided worthy, local causes, especially the hospital, ambulance service, schools and sports organisations.

"We wrote this book to honour the many men and women who worked tirelessly building the co-op into an icon for Lithgow and surrounding districts, from meager beginnings," reads the book's epilogue.

The authors remember the Co-ey as a "very large family" that left a gap in Lithgow's social and economic life when it collapsed in 1980, a victim of changing times and mediocre management.

"What remains includes photos, memories, old buildings and some written records. If we had not put all this into a book, it would eventually disappear without trace."

## Behind the Scenes

Planning for the exhibition and celebration began in 2000 with informal discussions with the Scrivener Family and the Mt Irvine Progress Association. Following these talks, a committee was established with Darrel Conybeare, Ray Harrington, Kathleen Howard Smith, Bill Scrivener and Mary Reynolds. Kathy Harrington, with her particular research and artistic skills, found herself very much involved as well.

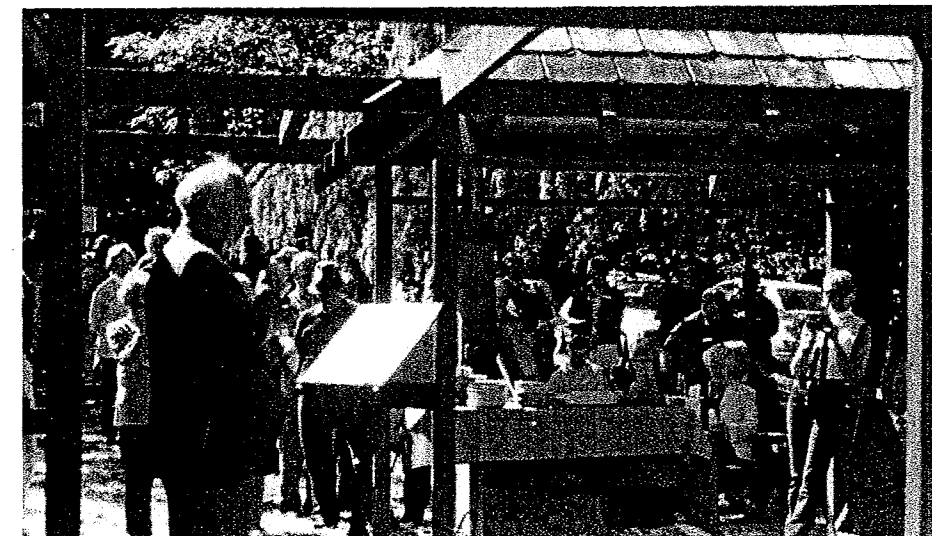
The Society used \$2 000 from the Centenary of Federation Community History Grant to employ Suzanne Mitchell, professional historian, to undertake some of the extensive research required in the State Archives, the National Archives and the National Library. The work and planning were demanding, taking place over many months. Interested members of the surveying profession whom we approached were all very helpful and wonderfully enthusiastic, as were members of the Scrivener family.

The sustained efforts of Ray, Kathy, Darrel, Leith, Bill, Ruth and, particularly, Bruce Gailey who erected the temporary display stands and organised and put up the lighting, which now enhances the Hall, contributed to the success. Many thanks must also go to members of the staff at Conybeare Morrison who were conscripted to undertake innumerable tasks of scanning and graphics. The result was an outstanding exhibition of professional quality.

The opening was on a balmy Spring day with over 120 people present. Terry Birtles, retired Associate Professor of Geography, gave the main address on Charles Robert Scrivener. Ian Shepherd, the Australian Manager for Remote Sensing, opened the Exhibition, bringing with him valuable Scrivener instruments from Canberra. Paul Harcombe, the Deputy Surveyor General of NSW, supported Ian Shepherd and brought wonderful instruments from the past, also supplying a splendid sign his department had made that was placed outside the Exhibition. Dick O'Keefe, a retired Surveyor, put up a "Scrivener Tent" in the grounds and his colleague, Keith Cadogan, also spoke in admiring terms, describing Charles R. Scrivener and his work as a Surveyor.



SCRIVENER'S TENT



TERRY BIRTLES GIVING THE MAIN ADDRESS

## Tributes to Enid Bell and Mary Chesney

### Enid Bell

*Enid Bell passed away in Canberra on 4<sup>th</sup> September, 2001.*

Enid and Bill Bell had their home in Mt Wilson for many years at three different locations. At first, in Wynnes Rocks Road, then in Mt Irvine Road next to ‘Sylvan Close’ and, finally, in Farrer Road at ‘Balangara’. In August 2000 they departed, with much regret, for health reasons, to live in Canberra near their daughters

Since the formation of our Society, Enid and Bill were always members and loyal supporters, being very conscious of the need to be actively involved in protecting the heritage and history of Mt Wilson.

Enid, whose talents and knowledge were extensive, had amazing depths of energy that contributed to the creation of beautiful gardens where she lived and to producing fine needlework and music, when she was not in the garden. In her ‘spare time’, with her broad interest in the world, she handwrote letters to those in authority or with influence on every issue she viewed as significant, especially when the matter in hand was about conservation. Diminutive and indomitable, Enid was outspoken and courageous in defence of principles if she saw these were under attack, or she sensed injustice.

The Historical Society is very grateful for Enid’s constant strength through the Society’s early years of growth in the Mt Wilson District, as these years have not been easy. Her friends will remember her, as will all those who knew her, as a redoubtable and splendid person, always ready to contribute, to help and to share her extensive knowledge of plants with others.

The Society extends its warmest sympathy to Bill and his family. The Society is equally grateful for Bill’s continued support, along with the membership now of his three daughters, Helen, Suzanne and Eugenie.

### Mary Chesney

*Mary Chesney passed away very suddenly on 8<sup>th</sup> October, 2001.*

Mary was another of the Society’s very loyal and devoted members. She and her husband, Robert, had been members since the foundation of our Society. Any time there was a call for assistance from our Committee, they were there, offering support in whatever form was necessary.

Mary was a charming, gentle person who possessed an apparently endless capacity for kindness and warm friendship. For those of us who had the privilege of working with her in the Society it was a special experience. She and Robert were the essence of reliability when assisting at the Turkish Bath Museum on the roster—this is an area that is very dependent on support of that kind and for Mary’s significant contribution there we express our warmest gratitude. Robert, very kindly, is continuing his valued help on the roster.

We all extend to Robert and his family our understanding and great sympathy in the sudden loss.

### Obituary: Stephen Scrivener 1925-2001

At the Exhibition for Charles Robert Scrivener, Stephen helped to unveil the Plaque commemorating his grandfather in the Mt Irvine Hall. Stephen spoke passionately of his grandmother, Annie Scrivener. To be a surveyor’s wife in those days was to have lonely life. Annie not only raised her own children, but also cared for the three children from her husband’s two deceased wives. Stephen remembered her as a warm, generous and caring woman.

Stephen’s parents were Pedder, son of Charles and Annie, and Mary Hindmarsh. Stephen spent the first five years of his life on Mt Irvine at ‘‘Taihoa’. The family, including young brother Barrie (now deceased), moved to Warialda in 1930 where Pedder was Town Clerk. Pedder later became Town Clerk at the Blue Mountains City Council until his retirement.

Stephen was principal Mechanical Engineer for the Department of Main Roads.

Stephen is survived by his second wife, Margaret and one son, Ian. Stephen and his first wife, Margaret, who is deceased, had a son, James, also deceased.

### Bill Scrivener

## Turkish Bath Development Works

Since the last issue of the *Newsletter*, the Society has received a very welcome grant of \$35 000 from the Commonwealth Department of Environment and Heritage towards the further conservation and development of the Turkish Bath building. This building and the surrounding precinct, on which the Society has a fifty-year lease, serves as the Society’s official premises, museum, exhibition and archive facility.

Since its foundation in 1996, the Society has received three State Government grants, through the NSW Heritage Office, to the total value of \$24 500 to supplement our own fund-raising efforts for conservation work on the building. A recent grant of \$4 500 from the NSW Ministry for the Arts has provided both heating for the building as a whole, and dehumidifying, particularly in the archival storage area.

The program of works to be carried out, in and around the building in the coming year, using the new grant money and some of the Society’s own resources will include the following tasks.

Some further draught-proofing of the 1920s’ ventilators and gaps around the entry door will be carried out in order to ensure more stable temperature and relative humidity conditions within the building. This is necessary to ensure optimal conditions for both the archival collection and the various exhibition materials that will be on display from time to time.

The seven stained and painted glass windows, several of which are in urgent need of repair, are to be cleaned and mended by a specialist craftsman in that field. As far as we know, these panes have undergone no conservation treatment since the mid 1880s when Richard Wynne imported them from England.

Exhibition hanging tracks are to be fitted in each of the three main rooms, immediately below the existing wooden picture rails. This will provide more flexibility in the positioning of exhibits than the various hanging devices that we are employing at present.

Some further rust-proofing treatment is required on the corrugated iron used on the roof of the Turkish Bath. We believe this iron has been in place at least since the early 1920s modification of the building to serve as living quarters for the builders who were constructing the main stone house on the *Wynstay Estate*. Some repairs are to be made to the cracking pavement along the southern margin of the Turkish Bath in order to make access safer.

A safety barrier is to be fitted to the northern doorway. This will mean the door can be opened to take advantage of the view and the breeze during spring and summer Open Days—although a bit of immersion in the humidity of these rooms during summer visits may well help visitors to get some feel for the ambience of the building’s original function as a Turkish Bath!

A modified design for a safety stairway above the cobblestones at the western end of the building is currently being prepared. The concept includes narrow stairs with a handrail against the tank-stand piers, and another handrail attached to the outer, crenellated stone wall so that visitors to the lower level and the basement have a choice of either descending by the stairs, or walking with the aid of a handrail on the original cobblestones.

Designs are also being prepared for minor repairs and upgrading of the basement beneath Room 3, in order to enable the location of the former Turkish Bath draught inlet, furnace and boiler to be featured. We also plan to provide in this area some minor storage and preparation facilities for an urn and other essentials for preparing light refreshments.

Elsewhere in the Turkish Bath precinct there are plans to carry out further leveling of the ground in several places, further fine surfacing of the combined walking and vehicle access track, and the replacement of the present temporary pine block stairway with a more permanent structure. The outdoor stage is to undergo some minor stabilization, and the lower retaining wall will be planted with local ferns and other appropriate plants so that the structure will become less visible when viewed from Mt Irvine Road. The various shrubs within the precinct and the rose garden at the western end of the Turkish Bath are also due for some TLC.

**Bruce J Wright**, Project Director

## Grants to Historical Societies And Their Hazards

Many believe that it is a simple process to obtain a Grant from Government authorities, or others, by sitting down one afternoon and filling in a few lines on two or three pages and sending it off with hopeful expectations. Having been involved with this process over the last seven years, since we undertook the responsibility of conserving the Turkish Bath Museum and founding the Mt Wilson and Mt Irvine Historical Society, I have to disillusion anyone who thinks it is an easy task. Most importantly, you are asking, in most cases, for public money. Even if the organization you apply to is 'independent', the funds it is administering have come from government sources. The Royal Australian Historical Society (RAHS) is an excellent example of this type of organization. It administers two grant schemes each year for societies like ours. The funds come from the Heritage Office of NSW, a Government instrumentality, and the NSW Ministry for the Arts. The first is the Local History and Archives Grants Program, due at the end of May, and the second is the Local History Research and Publication Grant Program, due at the end of July each year. These grants are measured in dollar for dollar terms and this requires careful measuring of your contribution against what you are asking for in terms of funds.

As Marie Metzke emphasised, at workshops called 'Grant Us This Day...' conducted at the RAHS, when filling out grant applications you must present a sound argument. She outlined these steps in the process:

1. Fill in all the blank spaces in the forms.
2. Organise your thoughts before writing.
3. Should you be applying? Heritage grants must be about heritage.
4. Do not just 'think up' what you want the night before.
5. The authority is interested most of all in the completion of the project and, as government funds are used, the Government wants recognition for its contribution!
6. Put together a Yearly Planner, putting down all special events, including grant application closing dates and even school holidays.
7. Do a budget for the year, identifying priorities and needs.
8. The title of the project should sell it: as it is entered in a database, the name should be brief (30 words maximum).
9. Make sure the project meets the criteria set out on the form.

And so, one could go on!

This Society, in spite of the above hazards, has been relatively successful in its efforts to obtain grants. Since August 2000, it has received \$500 from the Museums & Galleries Foundation of NSW for archival storage material. This grant is called a VIM Grant, or Volunteer Initiated Museums Grant. In October 2000, the Society received \$4 500 from the NSW Ministry for Arts for dehumidifiers and heaters, very important aids in controlling the environment within the Turkish Bath Museum. In October 2001, we received another VIM Grant of \$60 for materials for the Charles Robert Scrivener Exhibition. More recently, there has been the announcement of the Cultural Heritage Project Grant of \$35 000 from the Federal Government for further conservation work on the Turkish Bath Museum: this grant is described in more detail elsewhere.

While these grants have been of enormous assistance to the Society, it must never be forgotten that every dollar has to be accounted for and it must be clearly demonstrated that the money is used to advance the value of our work in preserving our history and heritage and that the public at large also benefits.

One can never afford to be complacent in such circumstances. Our own fundraising must be a top priority if the Society is to survive. Meanwhile what grants should we consider in 2002?

Mary Reynolds



## Grants from the Blue Mountains City

The Society gratefully acknowledges two grants from the Council this year: on May 24th 2001, a Community Grant of \$300 for help with our archives, and \$400 for the cost of the plaque for Charles Robert Scrivener celebrating the Centenary of Federation in this district. The plaque is in the Mount Irvine Hall along with a Federation Flag.

## Blazed Tree Stump in Farrer Road

Over a period of months, the Society has been negotiating with Ern and Margaret Morgan concerning the fate of a blazed tree stump, evidently an early surveyor's mark, on their boundary with Farrer Road. The Society, with the support of the Heritage Advisor of the Blue Mountains City Council, called in a Conservator Specialist in timber, Mr Julian Bickersteth of 'International Conservation Services', to advise Mr and Mrs Morgan and us on the best way to care for this historic item, which is now showing signs of decay. Mr Bickersteth gave detailed advice, which Mr and Mrs Morgan are now following, with the support of the Society. Siobhan Lavelle, archeologist, also inspected the stump and submitted her view to the Society, stating: 'as a marker from the early survey, the blazed stump is an item of historic and heritage significance for the Mount Wilson area. Timber elements of all kinds are particularly vulnerable to decay, rot and fire, so this stump is a very rare survivor. I would strongly support the carrying out of the works recommended in the ICS report.'

In August, the Society submitted an application for an emergency financial grant to the Heritage Council of NSW for about \$1 400 to assist with the conservation work on the stump. To date, we have received no reply to our application. The Society has also applied for the Blazed Tree Stump to be placed on the State Register of Heritage Items.



TREE STUMP WITH OWNER, MR ERN MORGAN

## Overheard.....

Overheard at the Mt Wilson Progress Association Meeting on the Future of Mt Wilson and Mt Irvine district, 'Ever since the cows came off the road, the post office shut and the telephone exchange closed down, this place has gone to the dogs!'



### Additional Items of Significance

1. The Mt Wilson Telescope: Milba Townend drew our attention to the fact that 'Christies' intended to auction a telescope that had belonged to the Clark Family of Sefton Hall, in Sydney in August 2001. The Society did approach others in the community to combine to make a joint bid, but that didn't prove feasible. A special thank you to Ross Kelly for taking the time to inspect the telescope and to report its condition to us. The Society bid \$2 500 for it, but without success: the telescope was not sold.

2. In July, the Museums and Galleries Foundation of NSW spent a day with us. They advised us on how we should best deal with the Turkish Bath as a Museum, including the question of dehumidifiers in the Turkish Bath, and marketing and publicity. This proved to be a very valuable exercise. The Society received a grant of \$4 500 from the NSW Ministry for Arts in January 2001 for dehumidifiers and heaters for the Turkish Bath. The heaters were purchased, but the dehumidifiers await further decision after the advice received from the Museum and Galleries Foundation. Bruce Wright will refer to this matter in his report.

3. It is pleasing to see that the lettering on the War Memorial in Mt Wilson is now restored. The restoration occurred as a result of the Society sharing a letter it had received from the Veterans' Affairs with the Mt Wilson Progress Association. The Federal Grant was given to the Blue Mountains City Council for this work, as the council is the body responsible for the War Memorial. A special Remembrance Day Ceremony was held on 11th November 2001 at the War Memorial.

4. Through the year, talks were given to: the Springwood Historical Society on the Turkish Bath; to the University of the Third Age on the Early Settlement of Mt Wilson, and to the Mt Victoria and District Historical Society on the Post Office History of Mt Wilson. At least two tours of the Turkish Bath Museum that took place in the Spring were a consequence of these talks.

5. From time to time, the Society is approached by individuals with requests for access to its archival material. For example, A PhD student came from Melbourne in early September wanting to research material on the reasons for settlement occurring in Mt Wilson as a 'Hill Station'. We have also received requests for copies of photographic material. Clearly, policies now need to be enunciated with regard to these aspects of the function of the Society.

### Stop Press

#### Mt Wilson Village Hall

In regard to the Mt Wilson Village Hall, the scope of works relating to the necessary works for Stage I of the repairs was issued on 28<sup>th</sup> May, 2001 and quotations were invited from Engineering Consultants for structural design. In early June, 2001, the Council appointed a Structural Engineering Consultant who, due to serious illness, could not perform. Council then engaged a new Consultant to provide structural drawings for the repair and refurbishment of the Hall in accordance with details of the Heritage Conservation Management Plan adopted by Council on 22<sup>nd</sup> May, 2001.

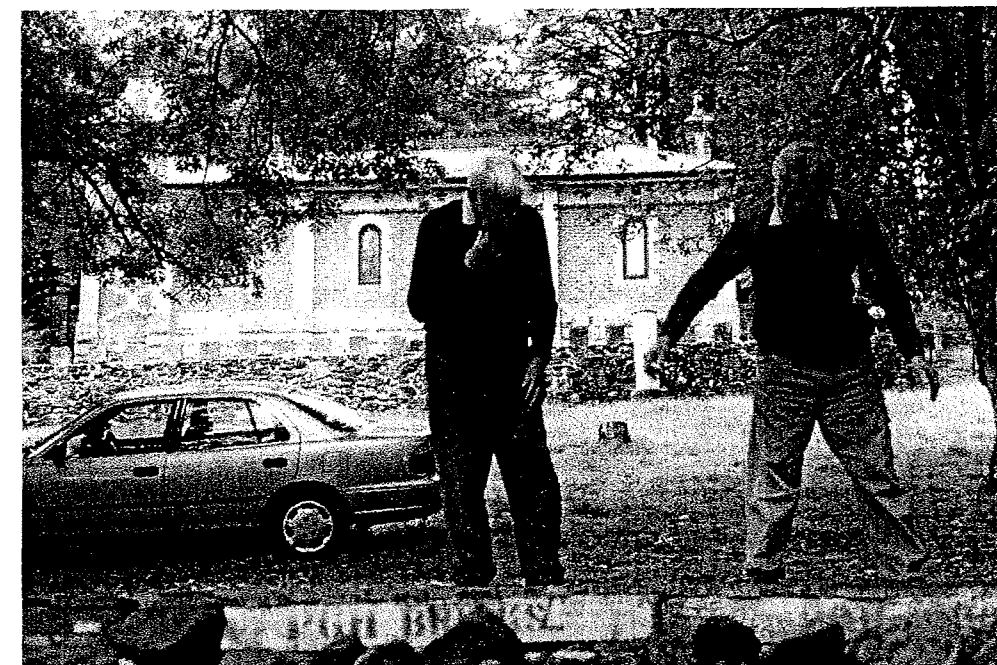
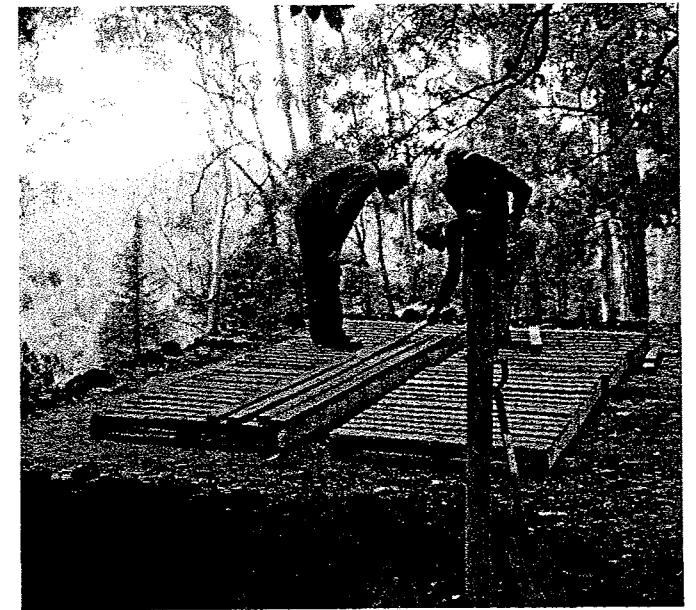
The Land Use Application was submitted to Council in October, 2001 and the proposal was placed on public exhibition in November, 2001. Following receipt of public submissions and comments, it has been necessary for Council to seek further inputs from Heritage Architects and to accordingly amend the works specifications.

May I express my grateful thanks to the Chairman, members of the Management Committee and all who have rallied round this year to make it such an outstanding one for the Society. A special thank you to Ellis who endures much from me and without whose steady hand and guidance, little would be achieved.

Mary Reynolds, February 2002

### Flags

At the Scrivener Exhibition there were flags flying on the poles erected outside the Mt Irvine Hall: the Australian Flag, a gift from the Federal member, Kerry Bartlett; the NSW flag, a gift from the State Member, Bob Debus; two Federation Flags obtained from Melbourne, total cost about \$160.



### WORKING BEE SATURDAY 23 MARCH 2002

The Society had a very productive Working Bee on Saturday 23 March 2002, spreading roadbase, cleaning up the site and preparing the stage for the Bloways Concert. Many thanks to all involved.